

Rift Valley Fever Virus (RVFV) Antibody

Catalog #: 01-0001

Immunogen: Sucrose purified virus (MP12 vaccine strain) from infected supernatant

Description: Rabbit polyclonal for RVFV

Raised in: New Zealand White Rabbits

Purification: Neat serum

Clonality: Polyclonal

Buffer: serum + 0.01% Azide

Size: 250ul

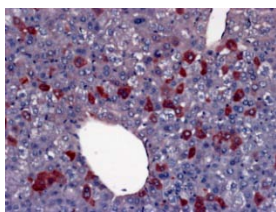
Relevance:

RVFV represents a surrogate strain for the Category A (NIAID) and USDA/HHS Select Agent Rift Valley Fever.

Recommended Dilutions:

ELISA: Assay-dependent dilution

IHC: Positive for detection of RVF in mouse liver

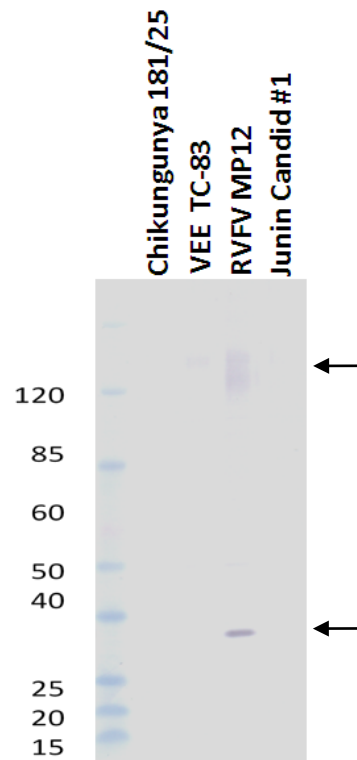


WB: Assay-dependent dilution. If probing against purified infected cell supernatant, cross-adsorption recommended.

IF: No Data

Storage: 2-3 weeks +4°C, -20°C long term

Species Reactivity: Does not react with Venezuelan Equine Encephalitis TC-83, Chikungunya 181/25, Vaccinia NYCBOH, or Junin Candid #1. Some cross-reactivity observed with fetal bovine serum and Vero cells



-Serum tested against sucrose purified infected cell-supernatant
 -Serum diluted 1:10,000 and incubated with 2% FBS for 2hr
 Prior to blotting

Intended for research use only, not for human, therapeutic, or diagnostic applications.
The buyer cannot sell or otherwise transfer this product for Commercial Purposes without written approval of Integrated BioTherapeutics, Inc.
Copyright 2014. Integrated BioTherapeutics, Inc. All rights reserved.