



IBT BIOSERVICES

21 Firstfield RD * Suite 100
Gaithersburg, MD 20878
877-411-2041
Services@ibtbioservices.com

Mouse anti-EBOV GPdTM mAb (4F3)

Catalog #: 0201-020

Lot #: 1501002

Immunogen: Purified recombinant Ebola Virus (EBOV) glycoprotein lacking the transmembrane region.

Description: Protein G purified mouse monoclonal antibody reactive to EBOV glycoprotein (GP). The antibody detects glycoprotein in virus-like particles (VLP) and EBOV glycoprotein without the transmembrane region (rGPdTM).

Supplied: 100 µg is supplied in PBS at a concentration of **1.39 mg/mL**. No preservative is added.

Clonality: Monoclonal of the IgG2a isotype

Relevance: The antibody can be used for detection of EBOV GP.

Recommended Dilutions:

ELISA: Assay-dependent dilution

WB: Assay-dependent dilution. Internal QC demonstrates good detection when using 4F3 mAb at a use dilution of 0.5 µg/mL.

Storage: 2-3 weeks +4°C, -20°C long term

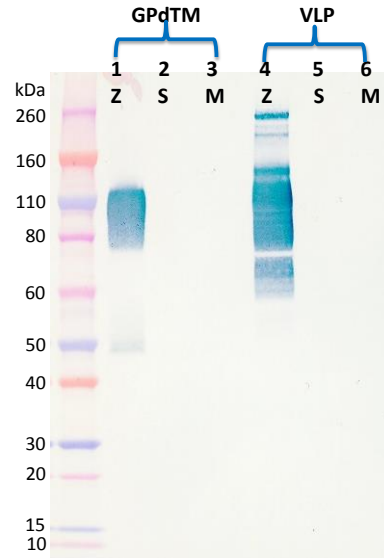
Cross Reactivity:

No cross-reactivity was observed to Sudan Virus (SUDV) or Marburg Virus (MARV) rGPdTM protein and VLP.

Related Products:

IBT provides a wide array of anti-filovirus specific antibodies, recombinant proteins and other infectious disease reagents. Please see our website, www.ibtbioservices.com for more details.

Western Blot Data:



Western blots were detected under reduced conditions with anti-EBOV GP 4F3 at 0.5 µg/mL and visualized using an anti-mouse IgG-HRP conjugate and TMB Membrane substrate. GP is visualized in EBOV rGPdTM (lane 1) and in Baculovirus-expressed EBOV VLP (lane 4). No cross-reactivity with SUDV or MARV GP was observed.

ELISA Data:

4F3 mouse mAb (µg/mL)	EBOV rGPdTM @ 1 µg/mL	SUDV rGPdTM @ 1 µg/mL	MARV rGPdTM @ 1 µg/mL	EBOV VLP @ 10 µg/mL	SUDV VLP @ 10 µg/mL	MARV VLP @ 10 µg/mL
10.0000	3.322	0.085	0.235	3.162	0.120	0.068
3.1623	3.470	0.072	0.071	3.347	0.063	0.060
1.0000	3.503	0.071	0.080	3.366	0.057	0.063
0.3162	3.496	0.070	0.091	3.279	0.057	0.063
0.1000	3.240	0.090	0.077	2.807	0.064	0.069
0.0316	2.685	0.089	0.096	1.918	0.069	0.060
0.0100	1.678	0.078	0.088	0.959	0.069	0.063
0.0032	0.792	0.080	0.096	0.418	0.065	0.070
0.0010	0.364	0.090	0.097	0.196	0.068	0.086
0.0003	0.186	0.120	0.126	0.126	0.083	0.083
0.0001	0.168	0.125	0.170	0.124	0.131	0.092
0.0000	0.105	0.104	0.120	0.070	0.081	0.079

rGPdTM proteins and VLPs were diluted to 1 µg/mL and 10 µg/mL, respectively, in PBS for plate coating. Anti-EBOV GP antibody 4F3 was serially diluted semi-log from 10 µg/mL and incubated on the coated plates. Washed plates were detected with anti-mouse IgG-HRP conjugate and TMB substrate. OD₆₅₀ is reported above.

Intended for research use only, not for human, therapeutic, or diagnostic applications.

The buyer cannot sell or otherwise transfer this product for Commercial Purposes without written approval of Integrated BioTherapeutics, Inc.

Copyright 2015. Integrated BioTherapeutics, Inc. All rights reserved