



IBT BIOSERVICES

21 Firstfield RD * Suite 100
Gaithersburg, MD 20878
877-411-2041
Services@ibtbioservices.com

Mouse anti-Staphylococcal Alpha Hemolysin Toxin mAb (6C12)

Catalog #: 0210-005

Lot #: 1405005

Immunogen: Polypeptide sequence of *Staphylococcus* alpha-hemolysin targeting the N terminus of the mature toxin.

Description: Mouse monoclonal antibody (mAb) reactive to full length *Staphylococcus aureus* alpha-hemolysin (alpha-toxin).

Supplied: 100 µg is supplied in PBS at a concentration of 0.38 mg/mL.

Purification: Antibody is purified using immobilized protein A.

Clonality: Monoclonal of the IgG_{2b} subtype

Relevance: The antibody can be used for detection of alpha-hemolysin produced secreted from *S. aureus* cells.

Recommended Dilutions:

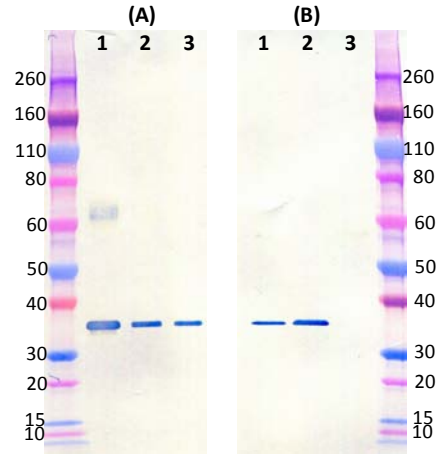
Optimal use dilution should be determined for each individual application. The following are general guidelines: 1 µg/mL for W.B. and 2 µg/mL for ELISA.

Storage: 2-3 weeks +4°C, -20°C long term

Cross Reactivity: This antibody does not appear to cross react with Staphylococcal enterotoxin B (SEB), rLukS-PV or rLukF-PV based on historical ELISA data.

Related Products: IBT provides a wide array of *Staphylococcal* products and other infectious disease reagents. Please see our website, www.ibtbioservices.com for more details.

Western Blot Data:



Western blots were detected with anti-alpha hemolysin mAb (6C12) at 1 µg/mL and visualized using an anti-mouse IgG-HRP conjugate and TMB membrane substrate. MW denotes Novex Sharp prestained protein markers.

(A) panel: Alpha-hemolysin at 50 ng (lane 1), 10 ng (lane 2) and 5 ng (lane 3) were visualized at an approximate molecular weight of 33 kDa.

(B) panel: 15 µL of 6-hour culture supernatant/lane Protein bands with molecular weights ~33 kDa were detected in the culture supernatant of USA300 (lane 1), 8325-4 (lane 2) but not in the negative control AGR Null 8325-4 strain (lane 3).

ELISA Data:

6C12 mAb concentration µg/mL	α-Toxin @ 1 µg/mL	Staph enterotoxin B @ 1 µg/mL	LukS-PV @ 1 µg/mL
2.0000	3.365	0.053	0.062
0.6325	3.284	0.055	0.063
0.2000	3.019	0.054	0.052
0.0632	2.484	0.046	0.055
0.0200	1.616	0.052	0.055
0.0063	0.813	0.049	0.054
0.0020	0.339	0.052	0.055
0.0006	0.156	0.051	0.054
0.0000	0.062	0.064	0.062

Various *Staphylococcal* toxins were coated to plates at a concentration of 1 µg/mL in PBS. Anti-alpha hemolysin monoclonal antibody 6C12 was serially diluted semi-log from 2 µg/mL and incubated on the toxin coated plates. Washed plates were detected with anti-mouse IgG-HRP conjugate and TMB substrate. OD₆₅₀ is reported above.

Intended for research use only, not for human, therapeutic, or diagnostic applications.

The buyer cannot sell or otherwise transfer this product for Commercial Purposes without written approval of Integrated BioTherapeutics, Inc.

Copyright 2014. Integrated BioTherapeutics, Inc. All rights reserved.