



IBT BIOSERVICES

Mouse anti-Staphylococcal Enterotoxin B mAb (2C1)

For Western Blot Detection

Catalog #: 0220-013

Lot #: 1109004

Immunogen: Staphylococcal enterotoxin B (SEB)

Description: Mouse monoclonal antibody reactive to *Staphylococcus aureus* enterotoxin B.

Supplied: 100 µg is supplied in PBS at a concentration of 0.55 mg/mL.

Purification: Antibody is purified using immobilized protein G.

Clonality: Monoclonal if the IgG₁ subclass

Relevance: This antibody only captures SEB weakly and is recommended primarily for use in Western blotting.

Recommended Dilutions:

ELISA: not recommended as a capture reagent.

WB: Recommended use dilution at 1 µg/mL

Storage: 2-3 weeks +4°C, -20°C long term

Cross Reactivity: this antibody does not appear to cross react with TSST-1 or SEC-1

Related Products:

Anti- *S. aureus* PVL LukS Polyclonal Antibody
Catalog # 04-0009

Anti- *S. aureus* Alpha-Hemolysin Polyclonal Antibody
Catalog # 04-0010

Anti-*S. aureus* SEB mAb for ELISA, WB, and toxin Neutralization
Catalog # 0220-009

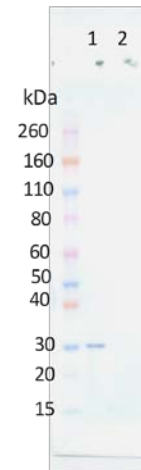
S. aureus LukS-PV His-tag Protein
Catalog # 0530-001

Coming Soon!

Anti-*S. aureus* Alpha Hemolysin mAb

21 Firstfield RD * Suite 100
Gaithersburg, MD 20878
240-778-6515
Services@ibtbioservices.com

Western Blot Data:



Western blot was performed loading 50 ng SEB (1), detecting with antibody 2C1 at 1 µg/mL use dilution and an anti-mouse HRP conjugate.

Intended for research use only, not for human, therapeutic, or diagnostic applications.

The buyer cannot sell or otherwise transfer this product for Commercial Purposes without written approval of Integrated BioTherapeutics, Inc. Copyright 2014. Integrated BioTherapeutics, Inc. All rights reserved