

Mouse anti-Staphylococcal Enterotoxin B mAb (2C1) For Western Blot Detection

Catalog #: 0220-013

Lot #: 1508004

Immunogen: Staphylococcal enterotoxin B (SEB)

Description: Mouse monoclonal antibody reactive to *Staphylococcus aureus* enterotoxin B.

Supplied: 100 µg is supplied in PBS at a concentration of **0.355 mg/mL**.

Purification: Antibody is purified using immobilized protein G.

Clonality: Monoclonal of the IgG₁ subclass

Relevance: This antibody only captures SEB weakly and is recommended primarily for use in Western blotting.

Recommended Dilutions:

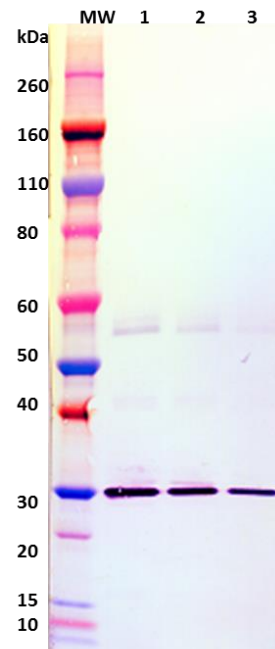
ELISA: Not recommended as a capture reagent

WB: Recommended use dilution at 1 µg/mL

Storage: 2-3 weeks +4°C, -20°C long term

Cross Reactivity: This antibody does not appear to cross react with TSST-1 or SEC-1

Western Blot Data:



Western blot detection of SEB at 100 ng, 50 ng and 25 ng (lanes 1-3). SEB was detected with monoclonal antibody 2C1 at 1 µg/mL and an anti-mouse IgG-HRP conjugate.

For additional *S. aureus* products, please visit:
<http://ibtbioservices.com/index.php/product-and-reagents/staphylococcal-products>

Intended for research use only. Not for human, therapeutic, or diagnostic applications.

The buyer cannot sell or otherwise transfer this product for Commercial Purposes without written approval of IntegratedBioTherapeutics, Inc.

Copyright 2015. Integrated BioTherapeutics, Inc. All rights reserved.