



IBT BIOSERVICES

21 Firstfield RD * Suite 100
Gaithersburg, MD 20878
877-411-2041
Services@ibtbioservices.com

Rabbit anti-EBOV VP40

Catalog #: 0301-010

Lot #: 1503007

Immunogen: Peptide sequence specific to Ebola Virus (EBOV) VP40 matrix protein.

Description: Affinity purified rabbit polyclonal antibody reactive to EBOV VP40. The antibody detects VP40 in virus-like particles (VLP) and recombinant VP40 (rVP40) in Western Blot and ELISA.

Supplied: 100 µg is supplied in PBS + 0.02% sodium azide at a concentration of **0.789 mg/mL**.

Raised in: Rabbits

Purification: Antibody is affinity purified using immobilized immunogen.

Clonality: Polyclonal

Relevance: The antibody can be used for detection of EBOV VP40 matrix protein.

Recommended Dilutions:

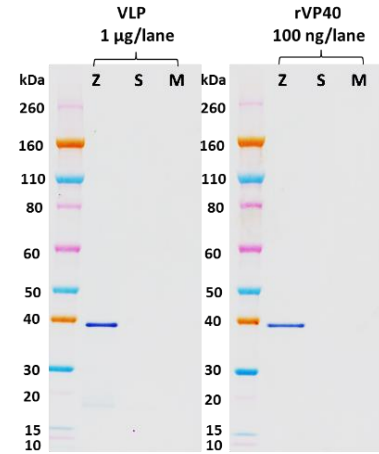
ELISA: Assay-dependent dilution.

WB: Assay-dependent dilution.

Storage: 2-3 weeks +4°C, -20°C long term. Avoid multiple freeze thaws.

Cross Reactivity: Cross-reactivity was observed against Sudan Virus (SUDV) VP40 in VLP and recombinant protein in the ELISA. No cross reactivity was observed with Marburg Virus (MARV) rVP40.

Western Blot Data:



Anti-EBOV VP40 antibody at 10 ng/mL was able to detect EBOV VP40 in EBOV VLPs and at least 100 ng of EBOV rVP40 by Western Blot Analysis. Western Blots were developed using an anti-rabbit IgG-HRP conjugate and TMB Membrane substrate. No cross-reactivity with MARV VP40 was observed.

ELISA Data:

Anti-EBOV VP40 Antibody (µg/mL)	EBOV VLP @ 10 µg/mL	SUDV VLP @ 10 µg/mL	MARV VLP @ 10 µg/mL	EBOV rVP40 @ 3 µg/mL	SUDV rVP40 @ 3 µg/mL	MARV rVP40 @ 3 µg/mL
10.0000	3.999	3.408	0.851	3.703	3.541	0.092
3.1623	3.973	2.554	0.351	4.000	3.061	0.077
1.0000	3.912	1.317	0.147	4.000	2.022	0.068
0.3162	3.598	0.527	0.077	3.771	0.987	0.060
0.1000	3.136	0.207	0.062	3.380	0.377	0.060
0.0316	2.055	0.103	0.061	2.545	0.165	0.059
0.0100	1.006	0.068	0.052	1.412	0.090	0.077
0.0032	0.404	0.059	0.053	0.592	0.069	0.061
0.0010	0.179	0.059	0.053	0.252	0.069	0.064
0.0003	0.096	0.060	0.055	0.123	0.064	0.064
0.0001	0.071	0.059	0.058	0.089	0.070	0.069
0.0000	0.063	0.062	0.062	0.068	0.084	0.075

VLPs and rVP40 proteins were diluted to 10 µg/mL and 3 µg/mL, respectively, in PBS for plate coating. Anti-EBOV VP40 antibody was serially diluted semi-log from 10 µg/mL and incubated on the coated plates. Washed plates were detected with anti-rabbit IgG-HRP conjugate and TMB substrate. OD650 is reported above. The anti-EBOV VP40 antibody strongly reacted to EBOV VP40 in VLP and rVP40. Cross-reactivity was observed against SUDV VP40 in VLP and rVP40. Signals were observed against MARV VLP at the highest concentrations of antibody tested.

Intended for research use only, not for human, therapeutic, or diagnostic applications.

The buyer cannot sell or otherwise transfer this product for Commercial Purposes without written approval of Integrated BioTherapeutics, Inc.

Copyright 2015. Integrated BioTherapeutics, Inc. All rights reserved.