



IBT BIOSERVICES

21 Firstfield RD * Suite 100
Gaithersburg, MD 20878
877-411-2041
Services@ibtbioservices.com

Biotinylated Rabbit anti-EBOV GP

Catalog #: 0301-015-bio

Lot #: 1503001

Immunogen: Peptide sequence to Ebola virus (EBOV) glycoprotein (GP).

Description: Affinity purified rabbit polyclonal antibody reactive to EBOV GP. The antibody detects GP in virus-like particles (VLP) and recombinant EBOV GP without the transmembrane region (EBOV rGPdTM) in Western blot and ELISA. Purified rabbit polyclonal antibody reactive to EBOV GP was conjugated with biotin and purified from unconjugated biotin by diafiltration.

Conjugation with Biotin: Antibody was conjugated with biotin at a molar ratio of 20:1 (Biotin: antibody)

Supplied: 100 µg of biotinylated antibody is supplied in PBS at a concentration of **1.22 mg/mL**.

Raised in: Rabbits

Purification: Antibody is affinity purified using immobilized immunogen.

Clonality: Polyclonal

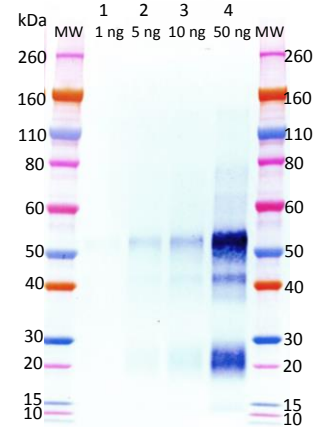
Relevance: The antibody can be used for detection of EBOV GP.

Storage: 2-3 weeks +4°C, -20°C long term

Recommended Dilutions:

ELISA, WB, Cross Reactivity: Not tested for the biotinylated antibody. For the specific antibody reactivity of the unconjugated antibody (Rabbit anti-EBOV GP, Catalog #: 0301-015, lot # 1501003), please see Page 2.

Western Blot of biotinylated antibody:



Biotinylated antibody was detected as low as 5 ng (Lane 2) using Streptavidin-HRP at a 1:6000 dilution and TMB substrate for visualization.

ELISA results for biotinylated antibody:

	Protein conc. (ng/mL)	OD 650 nm
Biotinylated anti-EBOV GP pAb lot 1503001	10000.0	3.344
	5000.0	3.281
	2500.0	3.299
	1250.0	3.193
	625.0	3.150
	312.5	2.989
	156.3	2.691
	78.1	2.170
	39.1	1.459
	19.5	0.862
9.8	0.453	
4.9	0.286	
Background	0.0	0.035

Biotinylated antibody was serially diluted 2-fold from 10 µg/mL in PBS and used to coat the 96-well plate. Washed plates were detected with Streptavidin-HRP at a 1:2000 dilution and TMB substrate. OD₆₅₀ is reported above.

Intended for research use only, not for human, therapeutic, or diagnostic applications.

The buyer cannot sell or otherwise transfer this product for Commercial Purposes without written approval of Integrated BioTherapeutics, Inc.

Copyright 2015. Integrated BioTherapeutics, Inc. All rights reserved.



IBT BIOSERVICES

21 Firstfield RD * Suite 100
 Gaithersburg, MD 20878
 877-411-2041
 Services@ibtbioservices.com

Reference Information

(Rabbit anti-EBOV GP, Cat. #: 0301-015, Lot #: 1501003)

Recommended Dilutions:

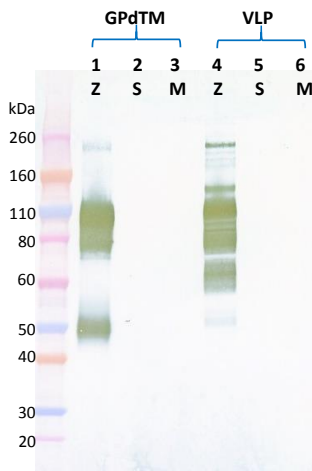
ELISA: Assay-dependent dilution.

WB: Assay-dependent dilution. Internal QC demonstrates good detection of GP when using antibody at 0.1 µg/mL.

Storage: 2-3 weeks +4°C, -20°C long term

Cross Reactivity: No cross reactivity to SUDV or MARV GP was observed in Western blotting. Signals were slightly higher than background signals in ELISA against SUDV and MARV VLP only at the high concentrations of antibody.

Western Blot Data of the unconjugated antibody:



Western blots were detected under reduced conditions with anti-EBOV GP antibody at 0.1 µg/mL and visualized using an anti-rabbit IgG-HRP conjugate and TMB Membrane substrate. GP is visualized in EBOV rGPdTM (lane 1) and in Baculovirus-expressed EBOV VLP (lane 4). No cross-reactivity with SUDV or MARV GP was observed.

ELISA Data of the unconjugated antibody:

anti-EBOV GP pAb (µg/mL)	EBOV rGPdTM @ 1 µg/mL	SUDV rGPdTM @ 1 µg/mL	MARV rGPdTM @ 1 µg/mL	EBOV VLP @ 10 µg/mL	SUDV VLP @ 10 µg/mL	MARV VLP @ 10 µg/mL
10.0000	3.620	0.157	0.175	3.685	0.257	0.198
3.1623	3.716	0.108	0.110	3.718	0.125	0.105
1.0000	3.754	0.076	0.080	3.684	0.079	0.079
0.3162	3.657	0.070	0.075	3.386	0.071	0.074
0.1000	3.347	0.087	0.075	2.699	0.069	0.067
0.0316	2.493	0.081	0.073	1.589	0.062	0.086
0.0100	1.442	0.117	0.084	0.758	0.076	0.065
0.0032	0.621	0.074	0.090	0.333	0.079	0.071
0.0010	0.287	0.119	0.083	0.173	0.082	0.104
0.0003	0.172	0.138	0.127	0.103	0.099	0.079
0.0001	0.143	0.114	0.119	0.113	0.100	0.090
0.0000	0.121	0.109	0.112	0.099	0.101	0.110

rGPdTM proteins and VLPs were diluted to 1 µg/mL and 10 µg/mL, respectively, in PBS for plate coating. Anti-EBOV GP antibody was serially diluted semi-log from 10 µg/mL and incubated on the coated plates. Washed plates were detected with anti-rabbit IgG-HRP conjugate and TMB substrate. OD650 is reported above.

Intended for research use only, not for human, therapeutic, or diagnostic applications.

The buyer cannot sell or otherwise transfer this product for Commercial Purposes without written approval of Integrated BioTherapeutics, Inc.

Copyright 2015. Integrated BioTherapeutics, Inc. All rights reserved.