

Rabbit anti-EBOV GP

Catalog #: 0301-015

Description:

Affinity purified rabbit polyclonal antibody reactive to EBOV GP. The antibody detects GP in virus-like particles (VLP) and recombinant GP without the transmembrane region (rGPdTM) in Western blot and ELISA.

Immunogen/ Target:

Peptide sequence to Ebola Virus (EBOV) glycoprotein (GP).

Formulation & Storage: Supplied in PBS in frozen format with no preservatives added. **Store at +4°C** for 2-3 weeks; **-80°C** for long-term

Notes & Usage Guidelines:

Clonality/Isotype: Polyclonal; N/A

Host: Rabbit

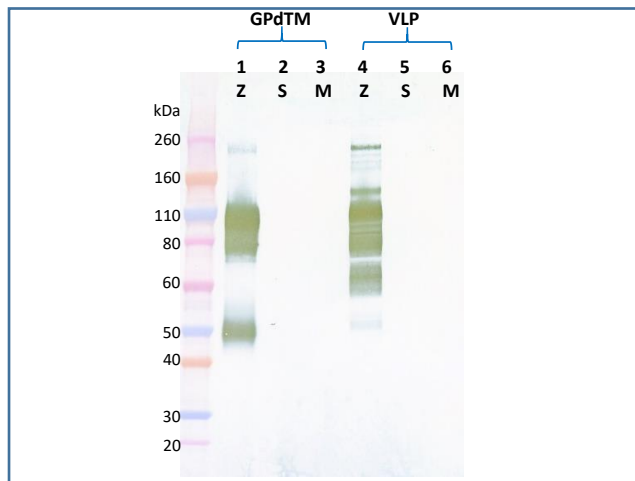
ELISA: Assay-dependent dilution

WB: Assay-dependent dilution

Applications

Western Blot Data:

Western blots were detected under reduced conditions with anti-EBOV GP antibody at 0.1 µg/mL and visualized using an anti-rabbit IgG-HRP conjugate and TMB Membrane substrate. GP is visualized in EBOV rGPdTM (lane 1) and in Baculovirus-expressed EBOV VLP (lane 4). No cross-reactivity with SUDV or MARV GP was observed.



ELISA Data:

rGPdTM proteins and VLPs were diluted to 1 µg/mL and 10 µg/mL, respectively, in PBS for plate coating. Anti-EBOV GP antibody was serially diluted semi-log from 10 µg/mL and incubated on the coated plates. Washed plates were detected with anti-rabbit IgG-HRP conjugate and TMB substrate. OD650 is reported below.

anti-EBOV GP pAb (µg/mL)	EBOV rGPdTM @ 1 µg/mL	SUDV rGPdTM @ 1 µg/mL	MARV rGPdTM @ 1 µg/mL	EBOV VLP @ 10 µg/mL	SUDV VLP @ 10 µg/mL	MARV VLP @ 10 µg/mL
10.0000	3.620	0.157	0.175	3.685	0.257	0.198
3.1623	3.716	0.108	0.110	3.718	0.125	0.105
1.0000	3.754	0.076	0.080	3.684	0.079	0.079
0.3162	3.657	0.070	0.075	3.386	0.071	0.074
0.1000	3.347	0.087	0.075	2.699	0.069	0.067
0.0316	2.493	0.081	0.073	1.589	0.062	0.086
0.0100	1.442	0.117	0.084	0.758	0.076	0.065
0.0032	0.621	0.074	0.090	0.333	0.079	0.071
0.0010	0.287	0.119	0.083	0.173	0.082	0.104
0.0003	0.172	0.138	0.127	0.103	0.099	0.079
0.0001	0.143	0.114	0.119	0.113	0.100	0.090
0.0000	0.121	0.109	0.112	0.099	0.101	0.110

Certificate of analysis:

A hardcopy of datasheet is sent along with the products. Please refer to it for detailed information. For older lots, refer to the applicable certificate of analysis that may be requested at products@ibtbioservices.com.

Related Products:

IBT provides a wide array of antibodies, recombinant proteins, and other infectious disease reagents. Please see our website, www.ibtbioservices.com for more details.

Intended for research use only, not for human, therapeutic, or diagnostic applications.

The buyer cannot sell or otherwise transfer this product for Commercial Purposes without written approval of Integrated BioTherapeutics, LLC.

Copyright 2023. Integrated BioTherapeutics, LLC. All rights reserved.