



**IBT BIOSERVICES**

# Rabbit anti-MARV GP polyclonal antibody

**Catalog #:** 0303-007

**Lot #:** 1807004

**Immunogen:** Peptide sequence to Marburg virus (MARV) glycoprotein (GP); Sequence is specific to the GP2 subunit.

**Description:** Affinity purified rabbit polyclonal antibody reactive to MARV GP. The antibody detects GP in virus-like particles (VLP) and recombinant GP without the transmembrane region (rGPΔTM) and recombinant GP without the transmembrane region and without the mucin-like domain (rGPΔmuc) in Western blot and ELISA.

**Supplied:** 100 µg of antibody is supplied at a concentration of 0.813 mg/mL in PBS with 0.02% Sodium azide.

**Raised in:** Rabbits

**Purification:** Antibody is affinity purified using immobilized immunogen.

**Clonality:** Polyclonal

**Relevance:** The antibody can be used for detection of MARV GP and more specifically, MARV GP2 when the protein is denatured and reduced.

### Recommended Dilutions:

**ELISA:** Assay-dependent dilution.

**WB:** Assay-dependent dilution; internal QC demonstrates detection of at least 0.2 µg of purified recombinant MARV GP, with a use dilution of 50 ng per mL of antibody.

**Storage:** 2-3 weeks +4°C, -80°C long term

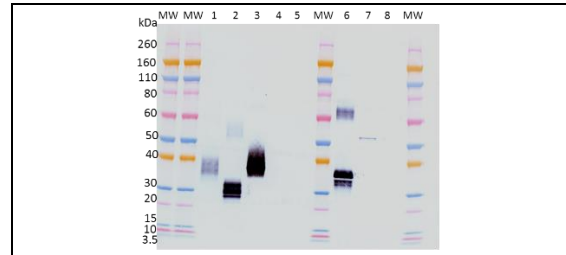
**Cross Reactivity:** No cross-reactivity was observed to Ebola virus (EBOV) rGPΔTM or Sudan virus (SUDV) VLP or SUDV rGPΔTM. There is an elevated background signal against EBOV VLP observed in both Western Blot and in ELISA.

### Related Products:

IBT provides a wide array of anti-filovirus specific antibodies, recombinant proteins and other infectious disease reagents. Please see our website, [www.ibtbioservices.com](http://www.ibtbioservices.com) for more details.

4 Research Court, Suite 300  
Rockville, MD 20850  
877-411-2041  
Services@ibtbioservices.com

### Western Blot Data:



#### Heat-denatured and reduced antigens:

Lane 1: 0.2 µg MARV-Musoke rGPΔTM cat# 0503-001  
Lane 2: 0.2 µg MARV-Angola rGPΔTM cat# 0506-015  
Lane 3: 0.2 µg RAVV rGPΔmuc cat# 0513-015  
Lane 4: 0.2 µg EBOV rGPΔTM cat# 0501-015  
Lane 5: 0.2 µg SUDV rGPΔTM cat# 0502-015  
Lane 6: 2 µg MARV-Musoke VLP cat# 0566-001  
Lane 7: 2 µg EBOV VLP cat# 0550-001  
Lane 8: 2 µg SUDV VLP cat# 0567-001  
MW denotes Novex® Sharp pre-stained protein standard.

Western blot was detected with anti-MARV GP polyclonal antibody at 50 ng/mL and visualized using an anti-rabbit IgG-HRP conjugate and TMB Membrane substrate. GP2 is visualized in the MARV rGPΔTM, rGPΔmuc and VLP, as indicated. Note: GP is highly glycosylated and most often detects at a molecular weight higher than the theoretical size due to the altered mobility.

### ELISA Data:

pAb (µg/mL)	Coating Antigens: VLP @ 10 µg/mL		Coating Antigens: rGPΔTM @ 1 µg/mL	
	MMARV	EBOV	AMARV	EBOV
10.000	3.366	1.725	3.493	0.087
3.162	3.282	0.881	3.491	0.064
1.000	3.047	0.374	3.388	0.056
0.316	2.466	0.162	3.217	0.056
0.100	1.459	0.093	2.580	0.059
0.032	0.685	0.075	1.462	0.059
0.010	0.299	0.064	0.649	0.053
0.003	0.148	0.068	0.251	0.055
0.001	0.084	0.059	0.126	0.058
0.000	0.064	0.074	0.077	0.069
0.000	0.077	0.067	0.066	0.059

VLPs and rGPΔTM proteins were diluted to 10 µg/mL and 1 µg/mL, respectively in PBS for plate coating. Anti-MARV GP polyclonal antibody was serially diluted semi-log from 10 µg/mL and incubated on the coated plates. Washed plates were detected with anti-rabbit IgG-HRP conjugate and TMB substrate. OD<sub>650</sub> is reported above.

**Intended for research use only, not for human, therapeutic, or diagnostic applications.**

The buyer cannot sell or otherwise transfer this product for Commercial Purposes without written approval of Integrated BioTherapeutics, Inc.

Copyright 2018. Integrated BioTherapeutics, Inc. All rights reserved.