



IBT BIOSERVICES

21 Firstfield RD * Suite 100
Gaithersburg, MD 20878
877-411-2041
Services@ibtbioservices.com

Rabbit anti-Bundibugyo GP

Catalog #: 0304-001

Lot #: 1306002

Immunogen: Peptide sequence to Bundibugyo Ebola virus (BEBOV) glycoprotein (GP).

Description: Affinity purified rabbit polyclonal antibody reactive to BEBOV GP. The antibody detects recombinant BEBOV GP without the transmembrane region (BEBOV rGPdTM) in Western blot and ELISA.

Supplied: 100 µg of antibody is supplied in PBS at a concentration of 0.97 mg/mL.

Raised in: Rabbits

Purification: Antibody is affinity purified using immobilized immunogen.

Clonality: Polyclonal

Relevance: The antibody can be used for detection of BEBOV GP.

Recommended Dilutions:

ELISA: Assay-dependent dilution.

WB: Assay-dependent dilution; internal QC demonstrates detection of recombinant BEBOV GPdTM with a use dilution of 50 ng per mL of antibody in diluent using an alkaline phosphatase antibody conjugate and chromogenic substrate for visualization.

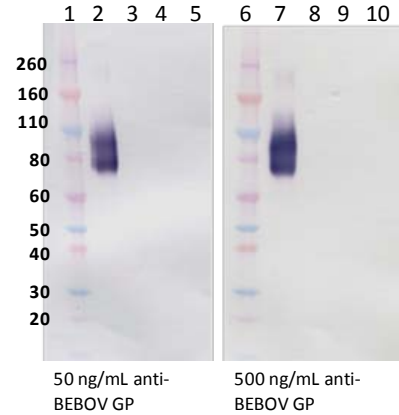
Storage: 2-3 weeks +4°C, -20°C long term

Cross Reactivity: No cross reactivity to Sudan ebolavirus (SEBOV) GP, Zaire ebolavirus (ZEBOV) GP or Marburg (MARV) GP, was observed in Western blot analysis or ELISA.

Intended for research use only, not for human, therapeutic, or diagnostic applications.

The buyer cannot sell or otherwise transfer this product for Commercial Purposes without written approval of Integrated BioTherapeutics, Inc.
Copyright 2014. Integrated BioTherapeutics, Inc. All rights reserved.

Western Blot Data:



Lane 1: 15 µL Novex MW markers
Lane 2: 0.2 µg BEBOV rGPdTM
Lane 3: 0.2 µg ZEBOV rGPdTM
Lane 4: 0.2 µg SEBOV rGPdTM
Lane 5: 0.2 µg MARV rGPdTM
Lane 6: 15 µL Novex MW markers
Lane 7: 0.2 µg BEBOV rGPdTM
Lane 8: 0.2 µg ZEBOV rGPdTM
Lane 9: 0.2 µg SEBOV rGPdTM
Lane 10: 0.2 µg MARV rGPdTM

Western blots were detected with anti-BEBOV GP at 50 ng/mL (left panel) and 500 ng/mL (right panel) and visualized using an anti-rabbit AP conjugate and chromogenic substrate. BEBOV GP is visualized as a broad band representing differing glycosylation patterns. Cross reactivity is not detected in the ZEBOV, SEBOV or MARV recombinant GP proteins (lanes 3, 4, 5, 8, 9, 10).

ELISA Data:

Anti-BEBOV GP pAb (µg/mL)	OD 650nm			
	BEBOV GP @ 1 µg/mL	ZEBOV GP @ 1 µg/mL	SEBOV GP @ 1 µg/mL	MARV GP @ 1 µg/mL
20.0	3.661	0.093	0.107	0.249
6.67	3.643	0.108	0.071	0.134
2.22	3.864	0.048	0.055	0.117
0.741	3.894	0.059	0.070	0.071
0.247	3.530	0.094	0.066	0.063
0.082	2.402	0.063	0.066	0.058
0.027	1.183	0.055	0.060	0.074
0.0	0.055	0.056	0.067	0.073

Recombinant proteins were diluted to 1 µg/mL in PBS for plate coating. Anti-BEBOV GP antibody was serially diluted 3-fold starting at 20 µg/mL and incubated on the coated plates. Washed plates were detected with anti-rabbit HRP conjugate and TMB substrate. OD₆₅₀ is reported above.