



IBT BIOSERVICES

21 Firstfield RD * Suite 100
Gaithersburg, MD 20878
877-411-2041
Services@ibtbioservices.com

Rabbit anti-Reston GP pAb

Catalog #: 0305-001

Lot #: 1306005

Immunogen: Peptide sequence to Reston Ebola virus (REBOV) glycoprotein (GP).

Description: Affinity purified rabbit polyclonal antibody reactive to REBOV GP. The antibody detects recombinant REBOV GP without the transmembrane region (REBOV rGPdTM) in Western blot analysis.

Supplied: 100 µg of antibody is supplied in PBS at a concentration of 1.92 mg/mL.

Raised in: Rabbits

Purification: Antibody is affinity purified using immobilized immunogen.

Clonality: Polyclonal

Relevance: The antibody can be used for detection of REBOV GP.

Recommended Dilutions:

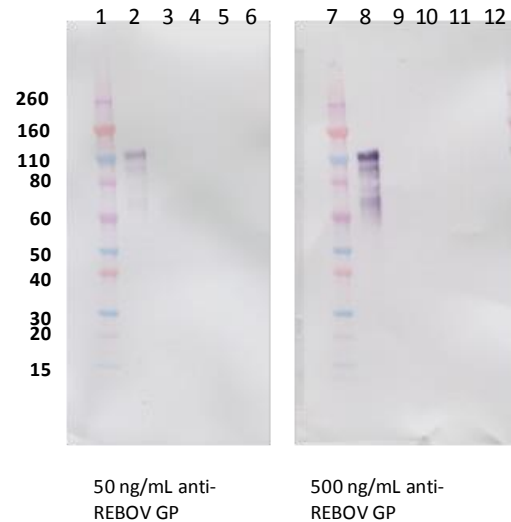
ELISA: Assay-dependent dilution.

WB: Assay-dependent dilution; internal QC demonstrates detection of recombinant REBOV GPdTM with a use dilution of 50 ng per mL of antibody in diluent using an alkaline phosphatase antibody conjugate and chromogenic substrate for visualization.

Storage: 2-3 weeks +4°C, -20°C long term

Cross Reactivity: No cross reactivity to Sudan ebolavirus (SEBOV) GP, Zaire ebolavirus (ZEBOV) GP, Bundibugyo (BEBOV) GP or Marburg (MARV) GP, was observed in Western blot analysis.

Western Blot Data:



Lane 1: 15 µL Novex MW markers
Lane 2: 15 µL REBOV rGPdTM supernatant
Lane 3: 0.2 µg ZEBOV rGPdTM
Lane 4: 0.2 µg SEBOV rGPdTM
Lane 5: 0.2 µg MARV rGPdTM
Lane 6: 0.2 µg BEBOV rGPdTM
Lane 7: 15 µL Novex MW markers
Lane 8: 15 µL REBOV rGPdTM supernatant
Lane 9: 0.2 µg ZEBOV rGPdTM
Lane 10: 0.2 µg SEBOV rGPdTM
Lane 11: 0.2 µg MARV rGPdTM
Lane 12: 0.2 µg BEBOV rGPdTM

Western blots were detected with anti-REBOV GP at 50 ng/mL (left panel) and 500 ng/mL (right panel) and visualized using an anti-rabbit AP conjugate and chromogenic substrate. REBOV GP is visualized as a broad band representing differing glycosylation patterns. Cross reactivity is not detected in the ZEBOV, SEBOV, MARV or BEBOV recombinant GP proteins (lanes 3, 4, 5, 6, 9, 10, 11, 12).

Intended for research use only, not for human, therapeutic, or diagnostic applications.

The buyer cannot sell or otherwise transfer this product for Commercial Purposes without written approval of Integrated BioTherapeutics, Inc.

Copyright 2014. Integrated BioTherapeutics, Inc. All rights reserved.