



IBT BIOSERVICES

21 Firstfield RD * Suite 100
Gaithersburg, MD 20878
877-411-2041
Services@ibtbioservices.com

Rabbit Anti-Chikungunya E2 Polyclonal Antibody

Catalog #: 0306-001

Lot#: 1306006

Immunogen: A peptide sequence specific to Chikungunya E2 glycoprotein.

Description: Affinity purified rabbit polyclonal antibody reactive to CHIKV strain 181/25. The antibody detects CHIKV strain 181/25 in Western blot.

Supplied: 100 µg of antibody is supplied in PBS at a concentration of 2.56 mg/mL.

Storage: It is recommended that aliquots be made and stored at -20°C long term; if storing at 4°C is desired longer term, it is recommended that a preservative be added.

Raised in: Rabbits

Purification: Antibody is affinity purified using immobilized immunogen.

Clonality: Polyclonal

Relevance: The 181/25 vaccine strain represents a surrogate strain for the Category C (NIAID) virus Chikungunya.

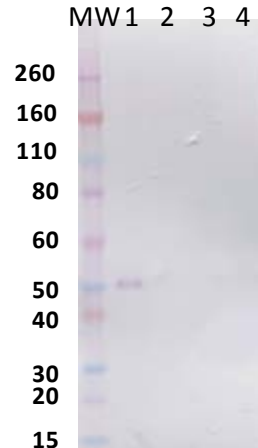
Recommended Dilutions:

ELISA: Assay-dependent dilution

WB: Assay-dependent dilution; QC testing demonstrates signal with the antibody at 0.5 µg/mL.

Species Reactivity: No cross-reactivity is observed with Venezuelan Equine Encephalitis strain TC-83, Japanese Encephalitis Virus 14-14-2, or Junin Candid #1.

Western Blot Data:



Western blot data of infected cell-supernatants. Approximately 10,000 pfus/well of the following were loaded: Chikungunya virus 181/25 (1), Venezuelan Equine Encephalitis strain TC-83 (2), Japanese Encephalitis Virus 14-14-2 (3) and Junin Candid #1 (4) detected with anti-Chikungunya polyclonal antibody at 0.5 µg/mL and anti-rabbit IgG (H&L) HRP. MW denotes Novex MW Markers. Specific signal to Chikungunya is observed in lane 1. A single band ~50 kDa corresponding to the E2 glycoprotein.

Intended for research use only, not for human, therapeutic, or diagnostic applications.