



IBT BIOSERVICES

4 Research Court, Suite 300
Rockville, MD 20850
877-411-2041
Services@ibtbioservices.com

Rabbit anti-LASV Z pAb

Catalog #: 0307-002

Lot #: 1610003

Immunogen: Peptide sequence to Lassa virus (LASV) Z protein.

Description: Affinity purified rabbit polyclonal antibody reactive to LASV Z in Western blot and ELISA.

Supplied: 100 µg of antibody is supplied in PBS + 0.02% sodium azide at a concentration of **0.608 mg/mL**.

Raised in: Rabbits

Purification: Antibody is affinity purified using immobilized immunogen.

Clonality: Polyclonal

Relevance: The antibody can be used for detection of LASV Z.

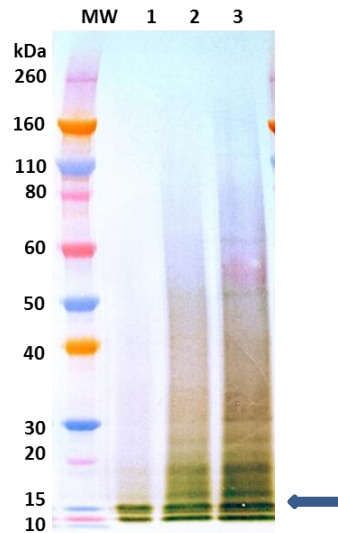
Recommended Dilutions:

ELISA: Assay-dependent dilution.

WB: Assay-dependent dilution. Internal QC demonstrates good detection of LASV Z when using antibody at 0.1 µg/mL.

Storage: 2-3 weeks +4°C, -20°C long term

Western Blot Data:



Western blot was detected under denaturing and reducing conditions with anti-LASV Z antibody at 0.1 µg/mL and visualized using an anti-rabbit IgG-HRP conjugate and TMB Membrane substrate. LASV Z is visualized at 25 ng, 50 ng, and 100 ng (lane 1, 2, and 3 respectively).

ELISA Data:

Rb anti-Lassa Z (µg/mL)	OD 650 nm
10.0000	3.743
3.1623	3.832
1.0000	3.812
0.3162	3.752
0.1000	3.594
0.0316	3.134
0.0100	2.086
0.0032	1.018
0.0010	0.438
0.0003	0.214
0.0001	0.138
0.0000	0.095

LASV Z protein was diluted to 10 ng/well in PBS for plate coating. Anti-LASV Z antibody was serially diluted semi-log from 10 µg/mL and incubated on the coated plates. Washed plate was detected with anti-rabbit IgG-HRP conjugate and TMB substrate. OD₆₅₀ is reported above.

Intended for research use only, not for human, therapeutic, or diagnostic applications.
The buyer cannot sell or otherwise transfer this product for Commercial Purposes without written approval of Integrated BioTherapeutics, Inc.

Copyright 2016. Integrated BioTherapeutics, Inc. All rights reserved.