



IBT BIOSERVICES

21 Firstfield RD * Suite 100
Gaithersburg, MD 20878
877-411-2041
Services@ibtbioservices.com

Rabbit anti-Zika NS1 polyclonal antibody

Catalog #: 0308-002

Lot #: 1605003

Immunogen: Peptide sequence to Zika virus (ZIKV) NS1 (nonstructural protein 1).

Description: Affinity-purified rabbit polyclonal antibody detects ZIKV virus lysate (strain FSS13025, Asian lineage)

Supplied: 100 µg of antibody is supplied in PBS + 0.02% sodium azide at a concentration of **1.018 mg/mL**.

Raised in: Rabbits

Purification: Antibody is affinity purified using immobilized immunogen.

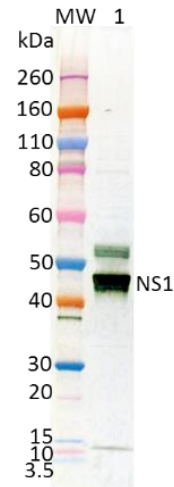
Clonality: Polyclonal

Storage: 2-3 weeks +4°C, -20°C long term

Application: ELISA, Western Blot and Immunofluorescence staining

Related Products: IBT provides a wide array of anti-filovirus specific antibodies and other infectious disease reagents. Please see our website, www.ibtbioservices.com for more details.

Western Blot:



5 µg of ZIKV sucrose-purified virus lysate (lane 1) tested under denaturing and reducing condition, was detected using the anti-ZIKV NS1 rabbit Pab at 0.5 µg/mL, followed by an anti-rabbit IgG-HRP conjugate and TMB membrane substrate.

ELISA Data:

Anti-ZIKV NS1 Rabbit Pab (µg/mL)	OD 650
100.000	2.922
31.623	1.951
10.000	1.018
3.162	0.444
1.000	0.210
0.316	0.121
0.100	0.086
0.032	0.073
0.010	0.080
0.003	0.069
0.001	0.068

ZIKV sucrose-purified virus lysate was diluted to 10 µg/mL in PBS for plate coating. Anti-ZIKV NS1 rabbit pAb was serially diluted semi-log from 100 µg/mL and incubated on the coated plates. Washed plate was detected with anti-rabbit IgG-HRP conjugate and TMB substrate. OD650 is reported above.

Intended for research use only, not for human, therapeutic, or diagnostic applications.

The buyer cannot sell or otherwise transfer this product for Commercial Purposes without written approval of Integrated BioTherapeutics, Inc.

Copyright 2016. Integrated BioTherapeutics, Inc. All rights reserved.