



IBT BIOSERVICES

21 Firstfield RD * Suite 100
Gaithersburg, MD 20878
877-411-2041
Services@ibtbioservices.com

Rabbit anti-LukA Polyclonal Ab

Catalog #: 0316-001

Lot #: 1505004

Immunogen: Peptide sequence specific to *Staphylococcus aureus* Leukocidin A (LukA) protein sequence.

Description: Affinity purified rabbit polyclonal antibody reactive to *Staphylococcal* LukA. The antibody detects recombinant LukA protein.

Supplied: 100 µg is supplied in PBS + 0.02% sodium azide at a concentration of **1.126 mg/mL**.

Raised in: Rabbits

Purification: Antibody is affinity purified using immobilized immunogen.

Clonality: Polyclonal

Relevance: The antibody can be used for detection of *Staphylococcal* LukA.

Recommended Dilutions:

ELISA: Assay-dependent dilution.

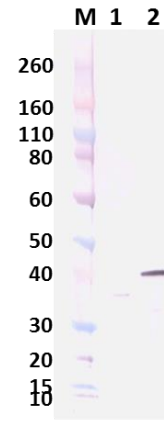
WB: Assay-dependent dilution.

Storage: 2-3 weeks +4°C, -20°C long term. Avoid multiple freeze thaws.

Cross Reactivity: No cross-reactivity was observed against other *Staphylococcus aureus* leukocidins.

For additional *S. aureus* products, please visit:
<http://ibtbioservices.com/index.php/product-and-reagents/staphylococcal-products>

Western Blot Data:



Rabbit anti-LukA Polyclonal Ab at 1.0 µg/mL was able to detect 100 ng of *Staphylococcal* LukA by Western Blot Analysis (Lane 2) but not *Staphylococcal* LukS-PV (Lane 1). Western Blots were developed using an anti-rabbit IgG-AP conjugate.

ELISA Data:

Anti-LukA Antibody (µg/mL)	<i>S. aureus</i> LukA @ 100ng/well OD 650nm	<i>S. aureus</i> LukS-PV @ 100ng/well OD 650nm
78.6	3.271	0.047
24.8	2.525	0.056
7.871	1.316	0.052
2.491	0.461	0.041
0.788	0.219	0.049
0.249	0.105	0.044
0.079	0.068	0.044
0.025	0.057	0.055

S. aureus LukA and LukS-PV proteins were coated onto ELISA plates at 100 ng/well. Rabbit anti-LukA polyclonal Ab was serially diluted semi-log from 78.6 µg/mL and incubated on the coated plates. Washed plates were detected with anti-rabbit IgG-HRP conjugate and TMB substrate. OD650 is reported above. The anti-LukA polyclonal Ab strongly reacted to LukA. Cross-reactivity was not observed against *S. aureus* LukS-PV at the highest concentrations of antibody tested.

Intended for research use only, not for human, therapeutic, or diagnostic applications.

The buyer cannot sell or otherwise transfer this product for Commercial Purposes without written approval of Integrated BioTherapeutics, Inc.

Copyright 2015. Integrated BioTherapeutics, Inc. All rights reserved.