



IBT BIOSERVICES

21 Firstfield RD * Suite 100
Gaithersburg, MD 20878
877-411-2041
Services@ibtbioservices.com

Rabbit anti-LukB Polyclonal Ab

Catalog #: 0317-001

Lot #: 1505005

Immunogen: Peptide sequence specific to *Staphylococcus aureus* Leukocidin B (LukB) protein sequence.

Description: Affinity purified rabbit polyclonal antibody reactive to *Staphylococcal* LukB. The antibody detects recombinant LukB protein and LukB expressed in Newman strain.

Supplied: 100 µg is supplied in PBS + 0.02% sodium azide at a concentration of **0.857 mg/mL**.

Raised in: Rabbits

Purification: Antibody is affinity purified using immobilized immunogen.

Clonality: Polyclonal

Relevance: The antibody can be used for detection of *Staphylococcal* LukB.

Recommended Dilutions:

ELISA: Assay-dependent dilution.

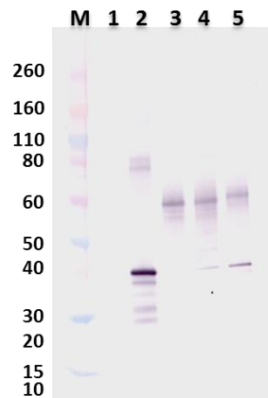
WB: Assay-dependent dilution.

Storage: 2-3 weeks +4°C, -20°C long term. Avoid multiple freeze thaws.

Cross Reactivity: No cross-reactivity was observed against other *Staphylococcus aureus* leukocidins.

For additional *S. aureus* products, please visit:
<http://ibtbioservices.com/index.php/product-and-reagents/staphylococcal-products>

Western Blot Data:



Rabbit anti-LukB Polyclonal Ab at 1.0 µg/mL was able to detect 100 ng of *Staphylococcal* LukB by Western Blot Analysis (Lane 2) but not *Staphylococcal* LukF-PV (Lane 1). The rabbit anti-LukB Polyclonal Ab at 1.0 µg/mL was also able to detect *Staphylococcal* LukB from cultures of Newman strain (Lane 5) and JE2 strain (Lane 4) but not in a LukB null strain of *Staphylococcus* (Lane 3). Western Blots were developed using an anti-rabbit IgG-AP conjugate.

ELISA Data:

Anti-LukB Antibody (µg/mL)	<i>S. aureus</i> LukB @ 100ng/well OD 650nm	<i>S. aureus</i> LukF-PV @ 100ng/well OD 650nm
18.386	3.18	0.043
5.818	2.897	0.043
1.841	2.454	0.042
0.583	1.411	0.042
0.184	0.682	0.041
0.058	0.299	0.043
0.018	0.138	0.042
0.006	0.083	0.042
0.002	0.053	0.043

S. aureus LukB and LukF-PV proteins were coated onto ELISA plates at 100 ng/well. Rabbit anti-LukB polyclonal Ab was serially diluted semi-log from 18.39 µg/mL and incubated on the coated plates. Washed plates were detected with anti-rabbit IgG-HRP conjugate and TMB substrate. OD650 is reported above. The anti-LukB polyclonal Ab strongly reacted to LukB. Cross-reactivity was not observed against *S. aureus* LukF-PV at the highest concentrations of antibody tested.

Intended for research use only, not for human, therapeutic, or diagnostic applications.

The buyer cannot sell or otherwise transfer this product for Commercial Purposes without written approval of Integrated BioTherapeutics, Inc.

Copyright 2015. Integrated BioTherapeutics, Inc. All rights reserved.