

## Rabbit Anti-Western Equine Encephalitis (WEEV) E2 Glycoprotein Polyclonal Ab

**Catalog #: 0319-001**

**Lot #: 1507005**

**Immunogen:** Peptide sequence specific to WEEV E2 glycoprotein.

**Description:** Affinity-purified rabbit polyclonal antibody reactive to WEEV E2 glycoprotein.

**Supplied:** 100 µg is supplied in PBS + 0.02% sodium azide at a concentration of **0.366 mg/mL**.

**Raised in:** Rabbits

**Clonality:** Polyclonal

**Relevance:** The antibody can be used for alphavirus research.

**Recommended Dilutions:**

**ELISA:** Assay-dependent dilution.

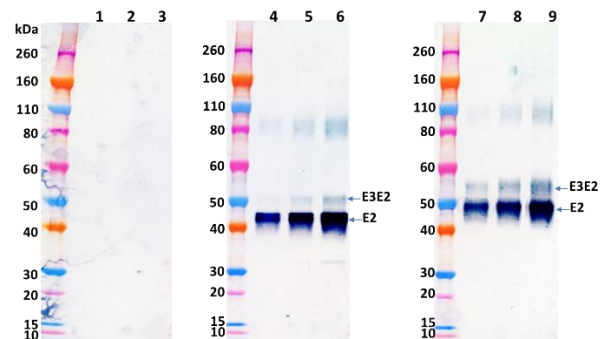
**Western Blot:** Assay-dependent dilution.

**Storage:** 2-3 weeks +4°C, -20°C long term. Avoid multiple freeze thaws.

**Cross Reactivity:** No cross reactivity was observed with Eastern Equine Encephalitis (EEEV) E3E2/E2 glycoprotein.

**Related Products:** IBT provides a wide array of alphavirus, filovirus proteins and antibodies and other infectious disease reagents. Please see our website, [www.ibtbioservices.com](http://www.ibtbioservices.com) for more details.

### Western Blot Detection



Rabbit Anti-WEEV E2 polyclonal Ab at 250 ng/mL was able to detect WEEV E3E2/E2 glycoprotein, insect-derived (cat #0561-001) loaded at 50, 100 and 200 ng/lane (lanes 4-6) and WEEV E3E2/E2 glycoprotein, mammalian-derived (cat #0562-001) (lanes 7-9). No cross-reactivity against EEEV E3E2/E2 glycoprotein (cat #0560-001) was observed (lanes 1-3). Western Blot was visualized using an anti-rabbit IgG-HRP conjugate and TMB Membrane substrate.

### ELISA Data:

Anti-WEEV pAb Concentration in µg/mL	OD 650 nm	
	against WEEV E3E2/E2 (insect-derived)	against WEEV E3E2/E2 (mammalian-derived)
10.0000	4.000	4.000
3.1623	3.868	3.936
1.0000	3.546	3.556
0.3162	2.806	2.872
0.1000	1.497	1.522
0.0316	0.622	0.648
0.0100	0.256	0.267
0.0032	0.121	0.129
0.0010	0.072	0.089
0.0003	0.060	0.068
0.0001	0.059	0.068
0.0000	0.062	0.076

WEEV proteins were diluted to 4 µg/mL in PBS for plate coating. Anti-WEEV E2 pAb was serially diluted semi-log from 10 µg/mL and incubated on the coated plate. Washed plate was detected with anti-rabbit IgG-HRP conjugate and TMB substrate. OD650 is reported above.

**Intended for research use only, not for human, therapeutic, or diagnostic applications.**

The buyer cannot sell or otherwise transfer this product for Commercial Purposes without written approval of Integrated BioTherapeutics, Inc.

Copyright 2015. Integrated BioTherapeutics, Inc. All rights reserved.