



# IBT BIOSERVICES

21 Firstfield RD \* Suite 100  
Gaithersburg, MD 20878  
877-411-2041  
Services@ibtbioservices.com

## Rabbit anti-EBOV soluble GP

**Catalog #:** 0365-001

**Lot #:** 1509004

**Immunogen:** Peptide sequence to Ebola Virus (EBOV) soluble glycoprotein (sGP).

**Description:** Affinity purified rabbit polyclonal antibody reactive to EBOV sGP. The antibody detects sGP in Western blot and ELISA.

**Supplied:** 100 µg of antibody is supplied in PBS + 0.02% sodium azide at a concentration of **1.103 mg/mL**.

**Raised in:** Rabbits

**Purification:** Antibody is affinity purified using immobilized immunogen.

**Clonality:** Polyclonal

**Relevance:** The antibody can be used for detection of EBOV sGP.

**Recommended Dilutions:**

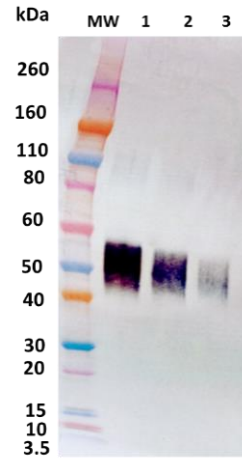
**ELISA:** Assay-dependent dilution.

**WB:** Assay-dependent dilution. Internal QC demonstrates good detection of EBOV sGP when using antibody at 0.1 µg/mL.

**Storage:** 2-3 weeks +4°C, -20°C long term

**Related Products:** IBT provides a wide array of anti-filovirus specific antibodies and other infectious disease reagents. Please see our website, [www.ibtbioservices.com](http://www.ibtbioservices.com) for more details.

### Western Blot Data:



Western blot was detected under denaturing and reducing conditions with anti-EBOV sGP antibody at 0.1 µg/mL and visualized using an anti-rabbit IgG-HRP conjugate and TMB Membrane substrate. EBOV sGP is visualized at 200 ng, 100 ng, and 50 ng (lane 1, 2, and 3 respectively).

### ELISA Data:

Rabbit anti-EBOV soluble GP (µg/mL)	OD 650nm	
	EBOV soluble GP	EBOV rGPdTM
1.000	3.741	0.193
0.500	3.375	0.111
0.250	2.187	0.079
0.125	1.007	0.101
0.063	0.390	0.054
0.031	0.173	0.057
0.016	0.115	0.059
0.008	0.085	0.067
0.004	0.076	0.082
0.002	0.064	0.065
0.001	0.059	0.059
0.000	0.057	0.077

EBOV sGP and EBOV rGPdTM proteins were diluted to 400 ng/well in PBS for plate coating. Anti-EBOV sGP antibody was serially diluted two-fold from 1 µg/mL and incubated on the coated plates. Washed plate was detected with anti-rabbit IgG-HRP conjugate and TMB substrate. OD650 is reported above.

**Intended for research use only, not for human, therapeutic, or diagnostic applications.**  
*The buyer cannot sell or otherwise transfer this product for Commercial Purposes without written approval of Integrated BioTherapeutics, Inc.*

**Copyright 2015. Integrated BioTherapeutics, Inc. All rights reserved.**