



IBT BIOSERVICES

21 Firstfield RD * Suite 100
Gaithersburg, MD 20878
877-411-2041
Services@ibtbioservices.com

Recombinant Ebola virus Glycoprotein minus the Transmembrane Region (EBOV rGPdTM)

Catalog #: 0501-015

Lot #: 1604008

Description: Mature, recombinant, His-tagged Ebola virus Glycoprotein minus the transmembrane domain (EBOV rGPdTM) is supplied as purified protein. EBOV rGPdTM is produced in Sf9 insect cells using baculovirus for expression and is purified by FPLC.

Storage: 2-3 weeks at -20°C, -80°C long term

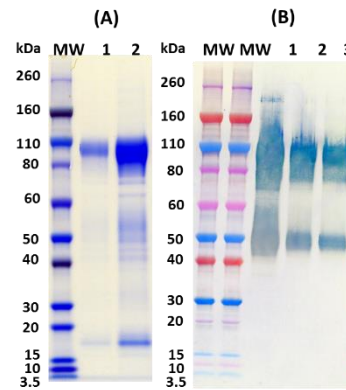
Size: 100 µg of protein supplied in PBS (supplemented with glycerol, arginine and glutamic acid) at a concentration of 1.250 mg/mL. The theoretical molecular weight of the protein is ~68 kDa including the His-tag, without glycosylation. Because of the highly glycosylated nature of this protein, migration in an SDS-PAGE gel is slowed resulting in broad, diffuse bands representing differing glycosylation forms.

Relevance: Recombinant glycoprotein provides a means as a control protein for immunoassays and a tool to enhance research.

Western Blot: Quality control testing demonstrates strong detection of GP null and GP1 under reduced conditions.

Related Products: IBT provides a wide array of anti-filovirus specific antibodies and other infectious disease reagents. Please see our website, www.ibtbioservices.com for more details.

SDS-PAGE & Western Blot Detection



(A) SDS-PAGE and stain demonstrating 1 µg and 5 µg (lanes 1, 2 respectively) of EBOV rGPdTM His-tag protein under denaturing and reducing conditions. MW denotes Novex Sharp prestained protein marker. (B) Western blot detection of EBOV rGPdTM at 500 ng, 100 ng and 50 ng (lanes 1-3) using rabbit anti-EBOV GP polyclonal antibody (catalog# 0301-015) at 0.5 µg/mL and anti-rabbit IgG-HRP conjugate, followed by TMB membrane substrate.

ELISA Data

EBOV rGPdTM ng/well	OD 650 nm
800	3.734
400	3.785
200	3.760
100	3.775
50	3.693
25	3.648
12.5	3.498
6.25	3.213
3.125	2.595
1.563	1.887
0.781	1.082
0.391	0.652

Plate was coated with EBOV rGPdTM starting at 800 ng/well, serially diluted in DPBS. Washed plate was detected using using one dilution of a positive control serum, followed with anti-IgG HRP conjugate and TMB substrate. OD₆₅₀ is reported. OD₆₅₀ is reported. Background of EBOV rGPdTM coated plate positive control serum was 0.111 OD₆₅₀.

Intended for research use only, not for human, therapeutic, or diagnostic applications.

The buyer cannot sell or otherwise transfer this product for Commercial Purposes without written approval of Integrated BioTherapeutics, Inc.

Copyright 2016. Integrated BioTherapeutics, Inc. All rights reserved.