

Rabbit anti-EBOV VLP pAb

Catalog #: 0315-001

Lot #: 1504005

Description:

Protein A purified rabbit polyclonal antibody reactive to EBOV VLP raised in New Zealand white rabbits.

Immunogen/ Target:

Ebola (Zaire strain) Virus-like Particles containing glycoprotein (GP), nucleoprotein (NP), and matrix protein (VP40).

Formulation & Storage: Supplied in PBS. Store at +4°C for 2-3 weeks, -20°C for long term.

Notes & Usage Guidelines:

Clonality/Isotype: Polyclonal; N/A

Host: Rabbit

ELISA: Assay-dependent dilution

WB: Assay-dependent dilution

Applications

Western Blot Data:

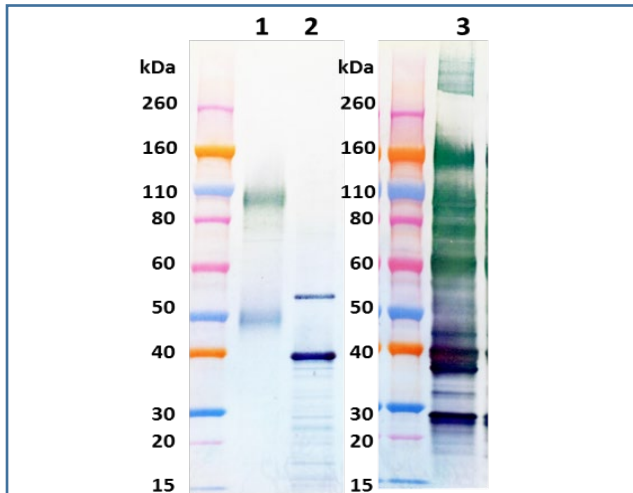
Western blot was detected with rabbit anti-EBOV VLP polyclonal antibody at 0.5 µg/mL and visualized using an anti-rabbit IgG-HRP conjugate and TMB membrane substrate.

Lane 1: EBOV GP minus the transmembrane domain (GPdTM).

Lane 2: EBOV matrix protein VP40.

Lane 3: Baculovirus-expressed EBOV VLP containing GP, NP and VP40.

ELISA Data: Not Tested



Certificate of Testing for:

Lot#: **1504005**

Volume: 500 µg

Concentration: 4.162 mg/mL

Related Products:

IBT provides a wide array of antibodies, recombinant proteins, and other infectious disease reagents. Please see our website, www.ibtbioservices.com for more details.

Intended for research use only, not for human, therapeutic, or diagnostic applications.

The buyer cannot sell or otherwise transfer this product for Commercial Purposes without written approval of Integrated BioTherapeutics, LLC.

Copyright 2023. Integrated BioTherapeutics, LLC. All rights reserved.