



IBT BIOSERVICES

21 Firstfield RD * Suite 100
Gaithersburg, MD 20878
877-411-2041
Services@ibtbioservices.com

Staphylococcus aureus
**Phenol Soluble Modulin-
Alpha 3 (PSM- α 3)**

Catalog #: 1401-004

Lot #: 1502001

Description: Purified *Staphylococcus aureus* phenol soluble modulin (PSM- α 3) peptide.

Supplied: 100 μ g is supplied in phosphate buffered saline at a concentration of 1.15 mg/mL.

Storage: -20°C

Relevance: *S. aureus* secretes four short (~20 amino acids) α -type phenol soluble modulins of which the PSM- α 3 plays the most prominent role in *S. aureus* virulence. PSM toxin is a major virulence factor of *S. aureus* and primarily causes cytolysis in red and white blood cells.

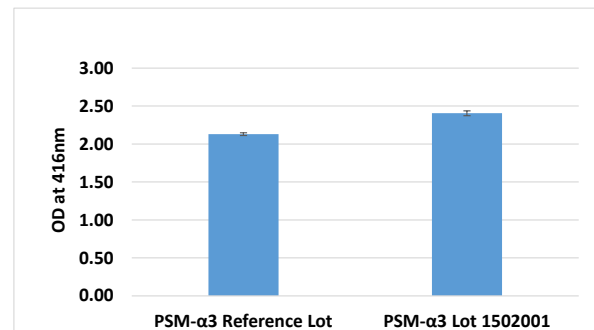
Recommended Dilutions:

ELISA: Assay-dependent dilution.

WB: Not recommended for this peptide.

Cytotoxicity assay: The peptide is active in functional lysis assays with horse red blood cells and human neutrophils (Data not shown). Lytic activity towards human or rabbit RBC for this product has not been tested. The peptide can be also used in serology assay as coating antigen to detect antibodies to PSM.

Toxin Functionality



Lysis of horse red blood cells by *S. aureus* PSM- α 3 (62.5 μ g/ml; 45 min). Red blood cell lysis was measured by the OD of the supernatants at 416nm after 45 min incubation at 37°C with PSM- α 3.

For additional *S. aureus* products, please visit:
<http://ibtbioservices.com/index.php/product-and-reagents/staphylococcal-products>

Intended for research use only, not for human, therapeutic, or diagnostic applications.

The buyer cannot sell or otherwise transfer this product for Commercial Purposes without written approval of Integrated BioTherapeutics, Inc.

Copyright 2015. Integrated BioTherapeutics, Inc. All rights reserved.