



IBT BIOSERVICES

4 Research Court, Suite 300
Rockville, MD 20850
877-411-2041
Services@ibtbioservices.com

Rabbit anti-EBOV NP pAb

Catalog #: 0301-012

Lot #: 2001001

Immunogen: Peptide sequence specific to Ebola virus (EBOV) Nucleocapsid Protein (NP).

Description: Affinity purified rabbit polyclonal antibody reactive to EBOV NP. The antibody detects NP in virus-like particles (VLP) in Western blot and ELISA.

Supplied: 100 µg is supplied in PBS at a concentration of 0.737 mg/mL. 0.02% Sodium azide has been added.

Raised in: Rabbits

Purification: Antibody is affinity purified using immobilized immunogen.

Clonality: Polyclonal

Relevance: The antibody can be used for detection of EBOV NP.

Recommended Dilutions:

ELISA: Assay-dependent dilution

WB: Assay-dependent dilution. Internal QC demonstrates strong detection of EBOV NP in 500 ng of VLP at a use dilution of 100 ng/mL of the antibody.

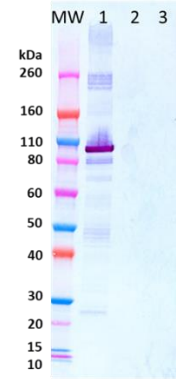
Storage: 2-3 weeks +4°C, -20°C long term

Cross Reactivity: No cross-reactivity to NP in Sudan virus (SUDV) VLP or Marburg virus (MARV) VLP.

Related Products:

IBT provides a wide array of anti-filovirus specific antibodies, recombinant proteins and other infectious disease reagents. Please see our website, www.ibtbioservices.com for more details.

Western Blot Data:



Western blot was detected under reduced conditions with anti-EBOV NP pAb at 100 ng/mL and visualized using an anti-rabbit IgG-HRP conjugate and TMB membrane substrate. NP is visualized in baculovirus-expressed EBOV VLP (lane 1) but not in the SUDV or MARV VLPs (lanes 2, 3).

ELISA Data:

Antibody (µg/mL)	Coating Antigen		
	10 µg VLP/mL or 1 µg VLP/well		
	EBOV	SUDV	MARV
20.0000	3.537	0.280	0.188
6.3245	3.420	0.140	0.105
2.0000	3.194	0.107	0.072
0.6324	2.482	0.078	0.069
0.2000	1.584	0.079	0.075
0.0632	0.752	0.080	0.088
0.0200	0.349	0.077	0.070
0.0063	0.161	0.071	0.072
0.0020	0.103	0.075	0.061
0.0006	0.090	0.074	0.072
0.0002	0.076	0.086	0.070
0.0000	0.075	0.073	0.063
	OD650		

VLPs were diluted to 10 µg/mL in PBS for plate coating. Anti-EBOV NP antibody was serially diluted semi-log from 20 µg/mL and incubated on the coated plates. Washed plates were detected with anti-rabbit IgG-HRP conjugate and TMB substrate. OD₆₅₀ is reported above.

Intended for research use only, not for human, therapeutic, or diagnostic applications.

The buyer cannot sell or otherwise transfer this product for Commercial Purposes without written approval of Integrated BioTherapeutics, Inc.

Copyright 2020. Integrated BioTherapeutics, Inc. All rights reserved.