



IBT BIOSERVICES

4 Research Court, Suite 300
 Rockville, MD 20850
 877-411-2041
 Services@ibtbioservices.com

Rabbit anti-MARV NP pAb

Catalog #: 0303-012

Lot #: 2003003

Immunogen: Peptide sequence specific to Marburg virus (MARV) Nucleocapsid Protein (NP).

Description: Affinity purified rabbit polyclonal antibody reactive to MARV NP. The antibody detects NP in virus-like particles (VLP) in Western blot and ELISA.

Supplied: 100 µg is supplied in PBS at a concentration of 1.390 mg/mL.

Raised in: Rabbits

Purification: Antibody is affinity purified using immobilized immunogen.

Clonality: Polyclonal

Relevance: The antibody can be used for detection of MARV NP.

Recommended Dilutions:

ELISA: Assay-dependent dilution

WB: Assay-dependent dilution. Internal QC demonstrates strong detection of MARV NP in 500 ng of VLP at a use dilution of 100 ng/mL of the antibody.

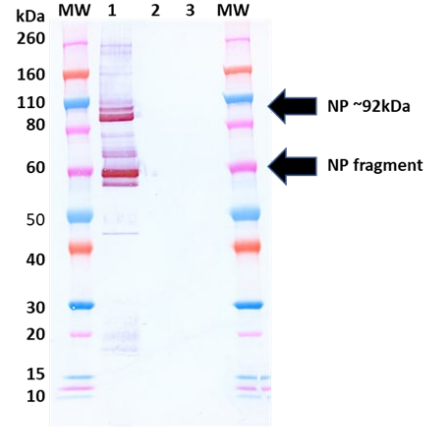
Storage: 2-3 weeks +4°C, -20°C long term

Cross Reactivity: No cross-reactivity to NP in Zaire Ebola virus (EBOV) VLP or Sudan Ebola virus (SUDV) VLP.

Related Products:

IBT provides a wide array of anti-filovirus specific antibodies, recombinant proteins and other infectious disease reagents. Please see our website, www.ibtbioservices.com for more details.

Western Blot Data:



Western blot was detected under reduced conditions with anti-MARV NP pAb at 100 ng/mL and visualized using an anti-rabbit IgG-HRP conjugate and TMB membrane substrate. NP is visualized in baculovirus-expressed MARV VLP (lane 1) but not in the SUDV or EBOV VLPs (lanes 2, 3).

ELISA Data:

Antibody (µg/mL)	EBOV VLP @ 10 µg/mL	SUDV VLP @ 10 µg/mL	MMARV VLP @ 10 µg/mL
20.0000	0.161	0.187	2.825
6.3246	0.104	0.123	2.925
2.0000	0.089	0.086	2.879
0.6325	0.109	0.083	3.011
0.2000	0.099	0.180	2.686
0.0632	0.098	0.114	2.146
0.0200	0.396	0.093	1.250
0.0063	0.532	0.153	0.609
0.0020	0.102	0.383	0.291
0.0006	0.093	0.156	0.179
0.0002	0.107	0.100	0.122
0.0000	0.075	0.086	0.267
OD 650 nm			

VLPs were diluted to 10 µg/mL in DPBS for plate coating. Anti-MARV NP antibody was serially diluted semi-log from 20 µg/mL and incubated on the coated plates. Washed plates were detected with anti-rabbit IgG-HRP conjugate and TMB substrate. OD₆₅₀ is reported above.

Intended for research use only, not for human, therapeutic, or diagnostic applications.

The buyer cannot sell or otherwise transfer this product for Commercial Purposes without written approval of Integrated BioTherapeutics, Inc.

Copyright 2021. Integrated BioTherapeutics, Inc. All rights reserved