



IBT BIOSERVICES

4 Research Court, Suite 300
Rockville, MD 20850
877-411-2041
Services@ibtbioservices.com

Mouse anti-Staphylococcal Enterotoxin B mAb (3D10)

Catalog #: 0220-009

Lot #: 2108001

Immunogen: Staphylococcal enterotoxin B (SEB)

Description: Mouse monoclonal antibody reactive to *Staphylococcus aureus* enterotoxin B.

Supplied: 100 µg is supplied in PBS at a concentration of 1.937 mg/mL.

Purification: Antibody is purified using immobilized protein G.

Storage: 2-3 weeks +4°C, ≤-20°C long term

Clonality: Monoclonal of the IgG₁ subtype

Recommended Dilutions:

ELISA: Assay-dependent dilution. The antibody can be used for capture of SEB in an ELISA sandwich assay and Western blot detection. It is not recommended for direct detection in an ELISA.

WB: Suggested use dilution of 1 µg/mL

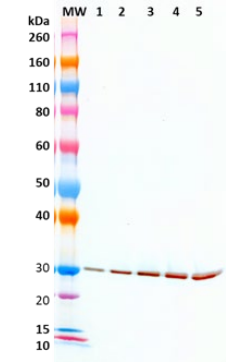
Neutralization: Assay-dependent dilution

Cross Reactivity: This antibody does not appear to cross react with Staphylococcal enterotoxin C (SEC-1) at the tested concentrations.

For additional *S. aureus* products, please visit:

<https://www.ibtbioservices.com/product-category/staphylococcus/>

Western Blot Data:



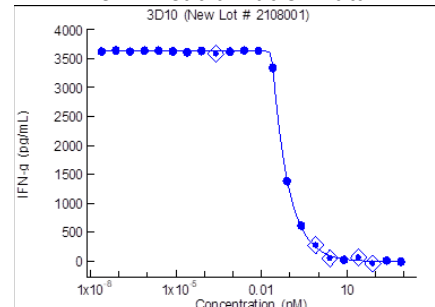
Western blot detection of SEB at 25 ng, 50 ng, 100 ng, 150 ng, and 200 ng (lanes 1-5). SEB was detected with monoclonal antibody 3D10 at 1 µg/mL and an anti-mouse IgG-HRP conjugate.

Capture ELISA Data:

ng/mL	OD 650 nm	
	SEB	SEC-1
100.00	2.592	0.363
31.622	2.245	0.384
10.000	1.362	0.400
3.162	0.754	0.393
1.000	0.421	0.334
0.000	0.420	0.390

Capture ELISA in which antibody 3D10 was coated to the plate overnight at 2-8°C at a concentration of 1 µg/mL. SEB and SEC1 was serially diluted semi-log (1:3.16 serial dilutions) from 100 ng/mL and incubated on the antibody coated plate. Captured SEB was detected using a rabbit anti-Staphylococcal Superantigens polyclonal antibody (cat#: 0311-001) and anti-rabbit IgG-HRP conjugate.

Toxin Neutralization Data:



Toxin Neutralization: Dose dependent suppression of SEB-induced IFN-γ production in human peripheral mononuclear cells (PBMC).

Intended for research use only, not for human, therapeutic, or diagnostic applications.

The buyer cannot sell or otherwise transfer this product for Commercial Purposes without written approval of Integrated BioTherapeutics, Inc.

Copyright 2021. Integrated BioTherapeutics, Inc. All rights reserved.