



# IBT BIOSERVICES

4 Research Court, Suite 300  
 Rockville, MD 20850  
 877-411-2041  
 Services@ibtbioservices.com

## Pan-filovirus Anti-Glycoprotein Chimeric Monoclonal Antibody (c21D10)

Catalog #: 0200-003

Lot #: 1811002

**Immunogen:** Purified recombinant filovirus glycoproteins, modified.

**Description:** Purified monoclonal antibody reactive to Ebola virus (EBOV), Sudan virus (SUDV), and Marburg virus (MARV) glycoproteins. The antibody detects glycoprotein in virus-like particles (VLP) and recombinant glycoprotein without the transmembrane region (rGPΔTM).

**Supplied:** 100 µg is supplied in DPBS at a concentration of **6.643 mg/mL**.

**Clonality:** Murine variable, human constant of the IgG1 isotype

**Relevance:** The antibody can be used for detection of EBOV, SUDV and MMARV glycoproteins.

**Recommended Dilutions:**

**ELISA:** Assay-dependent dilution

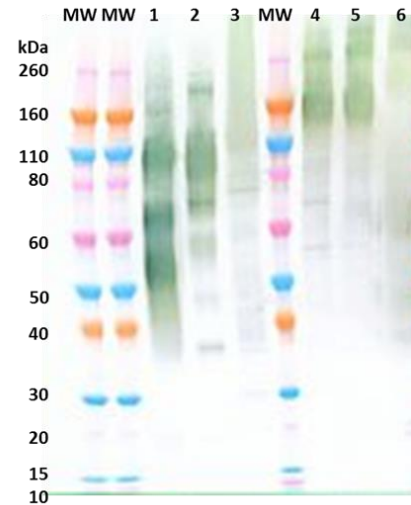
**WB:** Assay-dependent dilution. Internal QC demonstrates good detection when using c21D10 mAb at a use dilution of 0.5 µg/mL.

**Storage:** 2-3 weeks +4°C, -80°C long term

**Related Products:**

IBT provides a wide array of anti-filovirus specific antibodies, recombinant proteins and other infectious disease reagents. Please see our website, [www.ibtbioservices.com](http://www.ibtbioservices.com) for more details.

**Western Blot Data:**



In Western Blot, glycoproteins were detected under reducing and denaturing conditions using Pan-filovirus anti-glycoprotein c21D10 at 0.5 µg/mL and visualized using an anti-human IgG-HRP conjugate and TMB Membrane substrate. rGPΔTM expressed in SF9 insect cells are visualized in lanes 1-3: EBOV (lane 1), SUDV (lane 2) and MARV (Angola) (lane 3). rGPΔTM expressed in HEK-293T cells are visualized in lanes 4-6: EBOV (lane 4), SUDV (lane 5) and MARV (Musoke) (lane 6). 200 ng/lane of EBOV or SUDV rGPΔTM and 500 ng/lane of MARV rGPΔTM were loaded per lane.

**ELISA Data:**

c21D10 (µg/mL)	rGPΔTM expressed in SF9 insect cells			Virus-like particles		
	EBOV	SUDV	MARV	EBOV	SUDV	MARV
100.000	3.521	3.768	3.508	2.250	2.795	2.907
31.623	3.957	3.819	3.762	2.194	2.871	2.867
10.000	3.831	3.809	3.732	1.851	2.679	2.501
3.162	3.769	3.686	3.442	1.545	2.295	1.898
1.000	3.626	3.536	2.952	1.132	1.807	1.126
0.316	3.104	3.157	2.244	0.644	1.068	0.526
0.100	2.096	2.103	1.212	0.323	0.534	0.228
0.031	0.943	1.034	0.512	0.169	0.245	0.130
0.010	0.402	0.406	0.242	0.110	0.131	0.089
0.003	0.162	0.178	0.130	0.080	0.097	0.082
0.001	0.094	0.114	0.098	0.073	0.080	0.070
0.000	0.086	0.088	0.103	0.062	0.076	0.074

GPΔTM proteins and VLP were diluted to 1 µg/mL and 10 µg/mL, respectively, in PBS for plate coating. Pan-filovirus anti-glycoprotein c21D10 was serially diluted semi-log from 100 µg/mL and incubated on the coated plates. Washed plates were detected with anti-human IgG-HRP conjugate and TMB substrate. OD<sub>650</sub> is reported above.

**Intended for research use only, not for human, therapeutic, or diagnostic applications.**

The buyer cannot sell or otherwise transfer this product for Commercial Purposes without written approval of Integrated BioTherapeutics, Inc.

Copyright 2019. Integrated BioTherapeutics, Inc. All rights reserved.