



# IBT BIOSERVICES

21 Firstfield RD \* Suite 100  
Gaithersburg, MD 20878  
877-411-2041  
Services@ibtbioservices.com

## Mouse anti-EBOV VP40 mAb (5B12)

**Catalog #:** 0201-017

**Lot #:** 1511004

**Immunogen:** purified recombinant Ebola virus VP40 (EBOV rVP40) produced in *E. coli*.

**Description:** Protein G purified mouse monoclonal antibody reactive to EBOV VP40. The antibody detects VP40 in virus-like particles (VLP) and recombinant protein.

**Supplied:** 100 µg is supplied in buffer containing Histidine, sodium chloride and sucrose at a concentration of **0.872 mg/mL**. No preservative is added.

**Purification:** Antibody is purified using immobilized protein G.

**Clonality:** Monoclonal of the IgG2b isotype

**Relevance:** The antibody can be used for detection of EBOV VP40.

**Recommended Dilutions:**

**ELISA:** Assay-dependent dilution

**Western Blot:** Assay-dependent dilution. Internal QC demonstrates good detection when using 5B12 mAb at a use dilution of 10 ng/mL.

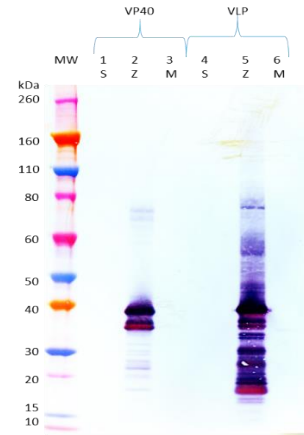
**Storage:** 2-3 weeks +4°C, -20°C long term

**Cross Reactivity:** No cross reactivity was observed against Sudan Virus (SUDV) or Marburg Virus (MARV) rVP40 or VLP.

**Related Products:**

IBT provides a wide array of anti-filovirus specific antibodies, recombinant proteins and other infectious disease reagents. Please see our website, [www.ibtbioservices.com](http://www.ibtbioservices.com) for more details.

**Western Blot Data:**



Western blots were detected under reduced conditions with anti-EBOV VP40 mAb 5B12 at 10 ng/mL and visualized using an anti-mouse IgG-HRP conjugate and TMB membrane substrate. rVP40 was loaded at 100 ng per lane. EBOV rVP40 is visualized in lane 2. VLP was loaded at 1 µg per lane. VP40 is detected in EBOV VLP in lane 5.

**ELISA Data:**

5B12 µg/mL	rVP40 (1 µg/mL)			VLP (10 µg/mL)		
	EBOV	SUDV	MMARV	EBOV	SUDV	MMARV
10.0000	3.879	0.154	0.056	3.621	0.090	0.066
3.1623	3.722	0.085	0.053	3.614	0.069	0.067
1.0000	3.634	0.082	0.057	3.593	0.060	0.066
0.3162	3.594	0.070	0.055	3.495	0.062	0.079
0.1000	3.412	0.069	0.052	3.288	0.054	0.067
0.0316	2.965	0.076	0.057	2.734	0.056	0.059
0.0100	2.145	0.082	0.051	1.828	0.051	0.064
0.0032	1.120	0.078	0.052	0.912	0.053	0.056
0.0010	0.464	0.088	0.057	0.375	0.065	0.074
0.0003	0.219	0.085	0.062	0.151	0.065	0.068
0.0001	0.100	0.068	0.056	0.095	0.054	0.058
	OD 650 nm					

rVP40 proteins and VLPs were diluted to 1 and 10 µg/mL, respectively in PBS for plate coating. Anti-EBOV VP40 antibody 5B12 was serially diluted semi-log dilutions from 10 µg/mL and incubated on the coated plates. Washed plates were detected with anti-mouse IgG-HRP conjugate and TMB substrate. OD<sub>650</sub> is reported above.

**Intended for research use only, not for human, therapeutic, or diagnostic applications.**

The buyer cannot sell or otherwise transfer this product for Commercial Purposes without written approval of Integrated BioTherapeutics, Inc.

Copyright 2015. Integrated BioTherapeutics, Inc. All rights reserved.