



# IBT BIOSERVICES

21 Firstfield RD \* Suite 100  
 Gaithersburg, MD 20878  
 877-411-2041  
 Services@ibtbioservices.com

## Mouse anti-SUDV GPdTM mAb (2H5)

**Catalog #:** 0202-029

**Lot #:** 1501001

**Immunogen:** Purified recombinant Sudan Virus (SUDV) glycoprotein lacking the transmembrane region.

**Description:** Protein G purified mouse monoclonal antibody reactive to SUDV glycoprotein (GP). The antibody detects glycoprotein in virus-like particles (VLP) and SUDV glycoprotein without the transmembrane region (rGPdTM).

**Supplied:** 100 µg is supplied in PBS at a concentration of **0.91 mg/mL**. No preservative is added.

**Clonality:** Monoclonal of the IgG<sub>1</sub> isotype

**Relevance:** The antibody can be used for detection of SUDV GP.

### Recommended Dilutions:

**ELISA:** Assay-dependent dilution

**WB:** Assay-dependent dilution. Internal QC demonstrates good detection when using 2H5 mAb at a use dilution of 0.5 µg/mL.

**Storage:** 2-3 weeks +4°C, -20°C long term

### Cross Reactivity:

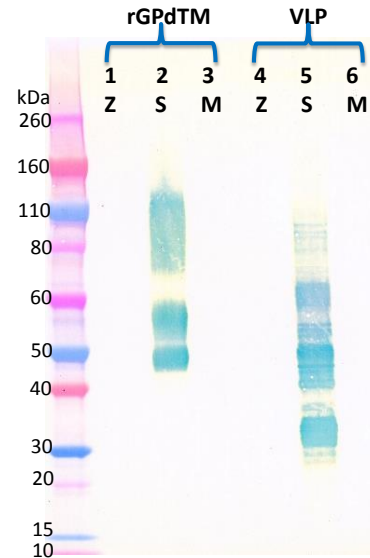
In Western blotting: No cross-reactivity was observed to Ebola Virus (EBOV) or Marburg Virus (MARV) rGPdTM protein and VLP.

In ELISA: Signals were observed to EBOV rGPdTM protein, EBOV VLP and MARV VLP at the highest antibody concentrations tested.

### Related Products:

IBT provides a wide array of anti-filovirus specific antibodies, recombinant proteins and other infectious disease reagents. Please see our website, [www.ibtbioservices.com](http://www.ibtbioservices.com) for more details.

### Western Blot Data:



Western blots were detected under reduced conditions with anti-SUDV GP 2H5 at 0.5 µg/mL and visualized using an anti-mouse IgG-HRP conjugate and TMB Membrane substrate. GP is visualized in SUDV rGPdTM (lane 2) and in Baculovirus-expressed SUDV VLP (lane 5). No cross-reactivity with EBOV or MARV GP was observed.

### ELISA Data:

2H5 mouse mAb (µg/mL)	EBOV rGPdTM @ 1 µg/mL	SUDV rGPdTM @ 1 µg/mL	MARV rGPdTM @ 1 µg/mL	EBOV VLP @ 10 µg/mL	SUDV VLP @ 10 µg/mL	MARV VLP @ 10 µg/mL
10.0000	0.869	3.462	0.147	0.885	3.553	0.339
3.1623	0.370	3.546	0.091	0.375	3.566	0.163
1.0000	0.168	3.550	0.076	0.171	3.562	0.097
0.3162	0.095	3.393	0.083	0.100	3.323	0.074
0.1000	0.121	3.058	0.132	0.071	3.023	0.064
0.0316	0.071	2.425	0.094	0.069	2.241	0.067
0.0100	0.090	1.560	0.080	0.078	1.248	0.068
0.0032	0.114	0.806	0.111	0.069	0.553	0.071
0.0010	0.114	0.351	0.121	0.091	0.242	0.088
0.0003	0.104	0.197	0.102	0.078	0.138	0.086
0.0001	0.140	0.136	0.145	0.088	0.099	0.086
0.0000	0.107	0.109	0.099	0.078	0.085	0.083

rGPdTM proteins and VLPs were diluted to 1 µg/mL and 10 µg/mL, respectively, in PBS for plate coating. Anti-SUDV GP antibody 2H5 was serially diluted semi-log from 10 µg/mL and incubated on the coated plates. Washed plates were detected with anti-mouse IgG-HRP conjugate and TMB substrate. OD<sub>650</sub> is reported above.

**Intended for research use only, not for human, therapeutic, or diagnostic applications.**

*The buyer cannot sell or otherwise transfer this product for Commercial Purposes without written approval of Integrated BioTherapeutics, Inc.*

**Copyright 2015. Integrated BioTherapeutics, Inc. All rights reserved**