



# IBT BIOSERVICES

21 Firstfield RD \* Suite 100  
Gaithersburg, MD 20878  
877-411-2041  
Services@ibtbioservices.com

## Mouse anti-Staphylococcal Enterotoxin B mAb (3D10)

**Catalog #:** 0220-009

**Lot #:** 1503004

**Immunogen:** Staphylococcal enterotoxin B (SEB)

**Description:** Mouse monoclonal antibody reactive to *Staphylococcus aureus* enterotoxin B.

**Supplied:** 100 µg is supplied in PBS at a concentration of **0.396 mg/mL**.

**Purification:** Antibody is purified using immobilized protein G.

**Storage:** 2-3 weeks +4°C, -20°C long term

**Clonality:** Monoclonal of the IgG<sub>1</sub> subtype

**Relevance:** The antibody can be used for capture of SEB in an ELISA sandwich assay and Western blot detection. It is not recommended for direct detection in an ELISA.

### Recommended Dilutions:

**ELISA:** Assay-dependent dilution. Internal QC demonstrates good capture of purified SEB using this monoclonal antibody coated to a plate at 1.0 µg/mL.

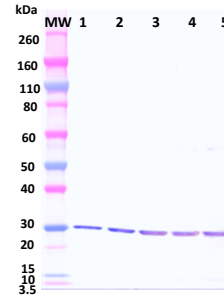
**WB:** Antibody can be utilized for Western blot detection of SEB at a use dilution of 1 µg/mL.

**Neutralization:** 10 nM of 3D10 completely inhibits superantigenic activity of 0.1 ng/ml SEB.

**Cross Reactivity:** This antibody does not appear to cross react with Staphylococcal enterotoxin C (SEC1).

**For additional *S. aureus* products, please visit:**  
<http://ibtbioservices.com/index.php/product-and-reagents/staphylococcal-products>

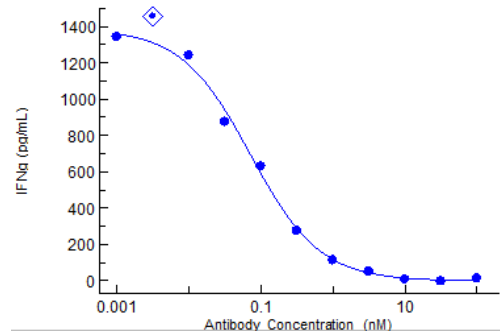
### Western Blot Data:



**Western blot detection** of SEB at 25 ng, 50 ng, 100 ng, 150 ng, and 200 ng (lanes 1-5). SEB was detected with monoclonal antibody 3D10 at 1 µg/mL and an anti-mouse IgG-HRP conjugate.

ng/mL	OD 650 nm	
	SEB	SEC-1
40.000	2.571	0.169
12.649	1.588	0.161
4.000	0.746	0.148
1.265	0.353	0.151
0.400	0.231	0.148
0.126	0.193	0.155
0.040	0.172	0.153
0.013	0.176	0.152
0.004	0.173	0.163
0.001	0.180	0.158
0.000	0.171	0.172

**Capture ELISA** in which antibody 3D10 was coated to the plate overnight at 2-8°C at a concentration of 1 µg/mL. SEB and SEC1 was serially diluted semi-log (1:3.16 serial dilutions) from 40 ng/mL and incubated on the antibody coated plate. Captured SEB was detected using a rabbit anti-Staphylococcal Superantigens polyclonal antibody (cat#: 0311-001) and anti-rabbit IgG-HRP conjugate.



**Toxin Neutralization:** Dose dependent suppression of SEB-induced IFN-γ production in human peripheral mononuclear cells (PBMC).

**Intended for research use only, not for human, therapeutic, or diagnostic applications.**

*The buyer cannot sell or otherwise transfer this product for Commercial Purposes without written approval of Integrated BioTherapeutics, Inc.*

**Copyright 2015. Integrated BioTherapeutics, Inc. All rights reserved.**