



IBT BIOSERVICES

21 Firstfield RD * Suite 100
Gaithersburg, MD 20878
877-411-2041
Services@ibtbioservices.com

Rabbit anti-EBOV GP

Catalog #: 0301-015

Lot #: 1501003

Immunogen: Peptide sequence to Ebola Virus (EBOV) glycoprotein (GP).

Description: Affinity purified rabbit polyclonal antibody reactive to EBOV GP. The antibody detects GP in virus-like particles (VLP) and recombinant GP without the transmembrane region (rGPdTM) in Western blot and ELISA.

Supplied: 100 µg of antibody is supplied in PBS + 0.02% sodium azide at a concentration of **1.09 mg/mL**.

Raised in: Rabbits

Purification: Antibody is affinity purified using immobilized immunogen.

Clonality: Polyclonal

Relevance: The antibody can be used for detection of EBOV GP.

Recommended Dilutions:

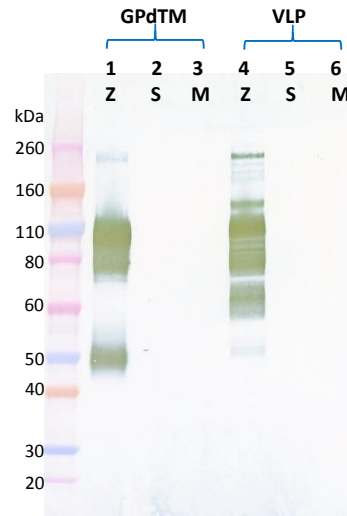
ELISA: Assay-dependent dilution.

WB: Assay-dependent dilution. Internal QC demonstrates good detection of GP when using antibody at 0.1 µg/mL.

Storage: 2-3 weeks +4°C, -20°C long term

Cross Reactivity: No cross reactivity to SUDV or MARV GP was observed in Western blotting. Signals were slightly higher than background signals in ELISA against SUDV and MARV VLP only at the high concentrations of antibody.

Western Blot Data:



Western blots were detected under reduced conditions with anti-EBOV GP antibody at 0.1 µg/mL and visualized using an anti-rabbit IgG-HRP conjugate and TMB Membrane substrate. GP is visualized in EBOV rGPdTM (lane 1) and in Baculovirus-expressed EBOV VLP (lane 4). No cross-reactivity with SUDV or MARV GP was observed.

ELISA Data:

anti-EBOV GP pAb (µg/mL)	EBOV rGPdTM @ 1 µg/mL	SUDV rGPdTM @ 1 µg/mL	MARV rGPdTM @ 1 µg/mL	EBOV VLP @ 10 µg/mL	SUDV VLP @ 10 µg/mL	MARV VLP @ 10 µg/mL
10.0000	3.620	0.157	0.175	3.685	0.257	0.198
3.1623	3.716	0.108	0.110	3.718	0.125	0.105
1.0000	3.754	0.076	0.080	3.684	0.079	0.079
0.3162	3.657	0.070	0.075	3.386	0.071	0.074
0.1000	3.347	0.087	0.075	2.699	0.069	0.067
0.0316	2.493	0.081	0.073	1.589	0.062	0.086
0.0100	1.442	0.117	0.084	0.758	0.076	0.065
0.0032	0.621	0.074	0.090	0.333	0.079	0.071
0.0010	0.287	0.119	0.083	0.173	0.082	0.104
0.0003	0.172	0.138	0.127	0.103	0.099	0.079
0.0001	0.143	0.114	0.119	0.113	0.100	0.090
0.0000	0.121	0.109	0.112	0.099	0.101	0.110

rGPdTM proteins and VLPs were diluted to 1 µg/mL and 10 µg/mL, respectively, in PBS for plate coating. Anti-EBOV GP antibody was serially diluted semi-log from 10 µg/mL and incubated on the coated plates. Washed plates were detected with anti-rabbit IgG-HRP conjugate and TMB substrate. OD650 is reported above.

Intended for research use only, not for human, therapeutic, or diagnostic applications.
The buyer cannot sell or otherwise transfer this product for Commercial Purposes without written approval of Integrated BioTherapeutics, Inc.

Copyright 2015. Integrated BioTherapeutics, Inc. All rights reserved.