



# IBT BIOSERVICES

21 Firstfield RD \* Suite 100  
Gaithersburg, MD 20878  
877-411-2041  
Services@ibtbioservices.com

## Rabbit anti-SEBOV VP40 pAb

**Catalog #:** 0302-001

**Lot #:** 1401006

**Immunogen:** Peptide sequence specific to Sudan Ebola virus (SEBOV) VP40 matrix protein.

**Description:** Affinity purified rabbit polyclonal antibody reactive to SEBOV VP40. The antibody detects VP40 in virus-like particles (VLP) and recombinant SEBOV VP40 (SEBOV rVP40).

**Supplied:** 100 µg is supplied in PBS at a concentration of 0.59 mg/mL. 0.02% Sodium azide has been added.

**Raised in:** Rabbits

**Purification:** Antibody is affinity purified using immobilized immunogen.

**Clonality:** Polyclonal

**Relevance:** The antibody can be used for detection of SEBOV VP40 matrix protein.

### Recommended Dilutions:

**ELISA:** Assay-dependent dilution

**WB:** Assay-dependent dilution. Internal QC demonstrates strong detection of SEBOV VP40 at a use dilution of 100 ng/mL of the antibody.

**Storage:** 2-3 weeks +4°C, -20°C long term

### Cross Reactivity:

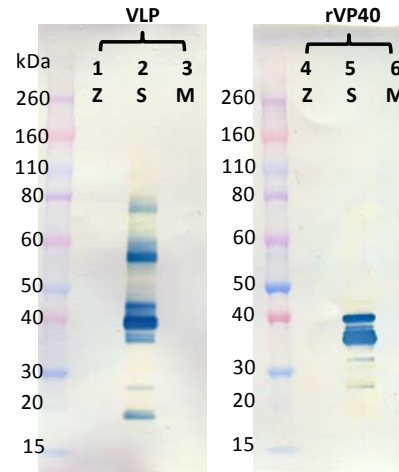
In Western Blotting: No cross-reactivity was observed to recombinant Zaire Ebola virus (ZEBOV) VLP or Musoke Marburg (MMARV) VLP, nor to ZEBOV and MMARV VP40.

In ELISA: Cross-reactivity against ZEBOV VLP and increased background against MMARV VLP were observed at the highest concentrations of antibody tested.

### Related Products:

IBT provides a wide array of anti-filovirus specific antibodies, recombinant proteins and other infectious disease reagents. Please see our website, [www.ibtbioservices.com](http://www.ibtbioservices.com) for more details.

### Western Blot Data:



Western blots were detected under reduced conditions with anti-SEBOV VP40 Pab at 100 ng/mL and visualized using an anti-rabbit IgG-HRP conjugate and TMB membrane substrate. VP40 is visualized in baculovirus-expressed SEBOV VLP (lane 2) but not in the ZEBOV or MMARV VLPs (lanes 1, 3). SEBOV rVP40 is also visualized (lane 5). No cross-reactivity with ZEBOV or MMARV rVP40 is observed (lanes 4, 6).

### ELISA Data:

Antibody (µg/mL)	OD 650 nm		
	ZEBOV VLP @ 10 µg/mL	SEBOV VLP @ 10 µg/mL	MMARV VLP @ 10 µg/mL
20.0000	0.4250	3.5150	0.2470
6.3246	0.1660	3.6790	0.1060
2.0000	0.0980	3.7810	0.0800
0.6325	0.0730	3.6620	0.0740
0.2000	0.0650	3.7080	0.0670
0.0632	0.0590	3.3920	0.0640
0.0200	0.0660	2.2800	0.0780
0.0063	0.0680	1.0760	0.0620
0.0020	0.0670	0.4210	0.0800
0.0006	0.0730	0.2010	0.1000
0.0002	0.0680	0.1090	0.0900
0.0000	0.0810	0.0720	0.0630

VLPs were solubilized in a final concentration of 1% Triton X-100 and diluted to 10 µg/mL in PBS (0.01% Triton) for plate coating. Anti-SEBOV VP40 antibody was serially diluted semi-log from 20 µg/mL and incubated on the coated plates. Washed plates were detected with anti-rabbit IgG-HRP conjugate and TMB substrate. OD<sub>650</sub> is reported above.

**Intended for research use only, not for human, therapeutic, or diagnostic applications.**

*The buyer cannot sell or otherwise transfer this product for Commercial Purposes without written approval of Integrated BioTherapeutics, Inc.*

Copyright 2014. Integrated BioTherapeutics, Inc. All rig