



# IBT BIOSERVICES

21 Firstfield RD \* Suite 100  
Gaithersburg, MD 20878  
877-411-2041  
Services@ibtbioservices.com

## Rabbit anti-SEBOV GP Polyclonal Antibody

**Catalog #:** 0302-020

**Lot #:** 1201001

**Immunogen:** Purified recombinant Sudan Ebola virus (SEBOV) Glycoprotein (GP), modified.

**Description:** Protein A purified rabbit polyclonal antibody reactive to SEBOV GP. The antibody detects recombinant SEBOV GP (modified) and GP expressed in virus-like particles (VLP) in Western blot and ELISA.

**Supplied:** 500 µg of antibody is supplied in PBS at a concentration of 1 mg/mL. 0.01% Sodium azide has been added.

**Raised in:** Rabbits

**Purification:** Antibody was purified using a Protein A column.

**Clonality:** Polyclonal

**Relevance:** The antibody can be used for detection of SEBOV GP.

### Recommended Dilutions:

**ELISA:** Assay-dependent dilution.

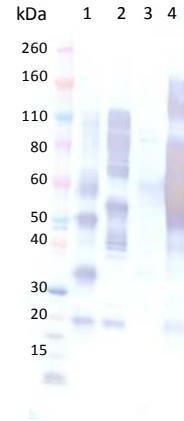
**WB:** Assay-dependent dilution; internal QC demonstrates strong detection of 0.2 µg of purified recombinant SEBOV GP (modified) with a use dilution from 1 - 5 µg per mL of antibody in diluent using an HRP antibody conjugate and chromogenic substrate for visualization.

**Storage:** 2-3 weeks +4°C, -20°C long term

**Cross Reactivity:** Western blotting demonstrates significant cross reactivity to Zaire Ebola Virus (ZEBOV) GP expressed in virus-like particles. A very slight cross-reactivity to Marburg virus (MARV) may also be observed. Cross reactivity to the HA epitope tag of the immunogen may also be observed.

**Intended for research use only, not for human, therapeutic, or diagnostic applications.** *The buyer cannot sell or otherwise transfer this product for Commercial Purposes without written approval of Integrated BioTherapeutics, Inc.*  
Copyright 2014. Integrated BioTherapeutics, Inc. All rights reserved.

### Western Blot Data:



Western blots were detected with anti-SEBOV GP (modified) at 1-5 µg/mL and visualized using an anti-rabbit HRP conjugate and chromogenic substrate. Denatured and reduced GP is visualized as multiple bands representing differing glycosylation patterns and GP subunits as observed above: 4 ug SEBOV VLP (Lane 1), 4 ug ZEBOV VLP (2), 4 ug MARV VLP (3) and 0.2 ug rSEBOV GP (modified)-HA tag expressed in mammalian cells (4).

### ELISA Data:

Amt Ab (µg/mL)	Avg OD650		
	SEBOV VLP	ZEBOV VLP	MARV VLP
20.000	1.89005	0.2034	0.11505
6.667	0.735	0.11565	0.0842
2.222	0.27025	0.08545	0.0747
0.741	0.13745	0.07655	0.07785
0.247	0.10315	0.08055	0.08055
0.082	0.095	0.0832	0.0784
0.027	0.11	0.09225	0.0928
0.009	0.10845	0.09315	0.1094

VLPs were solubilized in a final concentration of 1% Triton X-100 and diluted to 10 µg/mL in PBS (0.01% Triton) for plate coating. Anti-SEBOV GP polyclonal antibody was serially diluted 3-fold from 20 µg/mL and incubated on the VLP coated plates. Washed plates were detected with anti-rabbit HRP conjugate and TMB substrate. OD<sub>650</sub> is reported above.