



IBT BIOSERVICES

21 Firstfield RD * Suite 100
Gaithersburg, MD 20878
240-778-6515
Services@ibtbioservices.com

Rabbit anti-Staphylococcal Superantigens Polyclonal Antibody

Catalog #: 0311-001

Lot #: 1110005

Immunogen: Combination of Staphylococcal Superantigens: Enterotoxin B (SEB), Enterotoxin A (SEA), and Toxic Shock Syndrome Toxin (TSST-1)

Description: Rabbit polyclonal antibody broadly reactive to SEB, SEA, SEC and TSST-1

Supplied: 500 µg is supplied in PBS at a concentration of 1 mg/mL.

Purification: Antibody is purified using immobilized protein A.

Clonality: Polyclonal

Relevance: this antibody may be used in conjunction with monoclonal antibodies as capture to broadly detect the three major Staphylococcal superantigens using a single detector antibody.

Recommended Dilutions:

ELISA: Assay-dependent dilution. Internal QC demonstrates good detection of purified toxins and those in culture supernatant when the antibody is used at 2 µg/mL.

WB: This antibody can be utilized for detection at a concentration of 1 µg/mL.

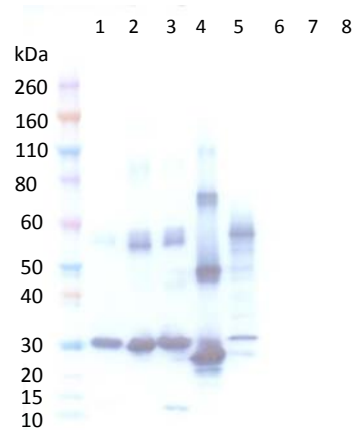
Storage: 2-3 weeks +4°C, -20°C long term

Cross Reactivity: This antibody was designed to broadly react with a number of toxins produced by *Staphylococcus aureus* strains. Those confirmed include SEA, SEB, SEC, TSST-1. This antibody does not detect alpha-hemolysin, nor LukS and LukF.

Related Products:

- Anti- *S. aureus* SEB monoclonal antibodies
Catalog # 0220-009 and 0220-009
- Anti- *S. aureus* Alpha-Hemolysin monoclonal antibody
Catalog # 0210-005
- Anti- *S. aureus* Alpha-Hemolysin Polyclonal Antibody
Catalog # 04-0010

Western Blot Data:



Western blot was detected with anti-Staphylococcal superantigens polyclonal antibody at 1 µg/mL and visualized using an anti-rabbit HRP conjugate and TMB Membrane substrate. Blot detected as follows: 50 ng SEB (lane 1), 50 ng SEA (lane 2), 50 ng SEC-1 (lane 3), 50 ng TSST-1 (lane 4), 15 µL of a 24 hour culture supernatant of an SEB producing *Staphylococcus aureus* strain (lane 5), 15 µL of the media without culture growth (lane 6), 50 ng LukS-PV (lane 7) and 50 ng LukF-PV (lane 8). Most enterotoxin and TSST-1 toxins detect between 27-30 kDa.

ELISA Data:

Ab Concentration (ug/mL)	Avg OD650				
	SEB @ 1 ug/mL	SEA @ 1 ug/mL	TSST-1 @ 1 ug/mL	LukS-PV @ 1 ug/mL	α-Toxin @ 1 ug/mL
2.0000	3.8464	3.7084	3.6972	0.0591	0.0825
0.6329	3.0772	2.0036	2.2382	0.0539	0.0748
0.2003	1.1375	0.8820	0.9244	0.0557	0.0575
0.0634	0.4373	0.3281	0.3261	0.0638	0.0774
0.0201	0.1959	0.1375	0.1508	0.0571	0.0653
0.0063	0.1099	0.1069	0.1097	0.0684	0.0701
0.0020	0.0794	0.0749	0.0766	0.0734	0.0705
0.0000	0.0613	0.0612	0.0630	0.0753	0.0816

Various Staphylococcal toxins were coated to a plate at a concentration of 1 µg/mL in PBS. Anti-Staphylococcal Superantigen polyclonal antibody was serially diluted semi-log from 2 µg/mL and incubated with the toxin coated plate. Washed plates were detected with anti-rabbit HRP conjugate and TMB substrate. OD₆₅₀ was reported above.

Intended for research use only, not for human, therapeutic, or diagnostic applications. The buyer cannot sell or otherwise transfer this product for Commercial Purposes without written approval of Integrated BioTherapeutics, Inc. Copyright 2014. Integrated BioTherapeutics, Inc. All rights reserved.