



**IBT BIOSERVICES**

4 Research Court, Suite 300  
Rockville, MD 20850  
877-411-2041  
[Services@ibtbioservices.com](mailto:Services@ibtbioservices.com)

## Rabbit anti-LukB Polyclonal Ab

**Catalog #:** 0317-001

**Lot #:** 1801002

**Immunogen:** Peptide sequence specific to *Staphylococcus aureus* Leukocidin B (LukB) protein sequence.

**Description:** Affinity purified rabbit polyclonal antibody reactive to *Staphylococcal* LukB. The antibody detects recombinant LukB protein and LukB expressed in Newman strain.

**Supplied:** 100 µg is supplied in PBS + 0.02% sodium azide at a concentration of 0.590 mg/mL.

**Raised in:** Rabbits

**Purification:** Antibody is affinity purified using immobilized immunogen.

**Clonality:** Polyclonal

**Relevance:** The antibody can be used for detection of *Staphylococcal* LukB.

**Recommended Dilutions:**

**ELISA:** Assay-dependent dilution.

**WB:** Assay-dependent dilution.

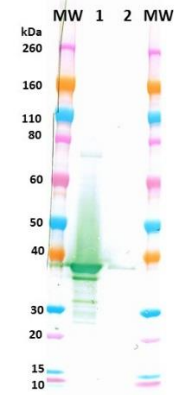
**Storage:** ≤-20°C long term. Avoid multiple freeze thaws.

**Cross Reactivity:** No cross-reactivity was observed against other *Staphylococcus aureus* leukocidins.

For additional *S. aureus* products, please visit:

<http://www.ibtbioservices.com/reagents/staphylococcus/>

### Western Blot Data:



Rabbit anti-LukB polyclonal antibody at 0.1 µg/mL was able to detect LukB in 100 ng of heat-denatured and reduced recombinant *S. aureus* LukA-LukB heterodimer (lane 1) and did not detect recombinant *S. aureus* LukF-PV (lane 2). Protein bands were visualized using an anti-rabbit IgG-HRP, followed by TMB Membrane Substrate.

### ELISA Data:

| Anti-LukB antibody (µg/mL) | OD 650   |  |
|----------------------------|--|--|
|                            | against 100 ng/well of recombinant LukA-LukB heterodimer | against 100 ng/well of recombinant LukF-PV protein |
| 10.0000                    | 3.821  | 0.128  |
| 3.1623                     | 3.719  | 0.037  |
| 1.0000                     | 3.630  | 0.081  |
| 0.3162                     | 3.517  | 0.065  |
| 0.1000                     | 3.231  | 0.089  |
| 0.0316                     | 2.360  | 0.044  |
| 0.0100                     | 1.412  | 0.093  |
| 0.0032                     | 0.598  | 0.099  |
| 0.0010                     | 0.253  | 0.075  |
| 0.0003                     | 0.132  | 0.078  |
| 0.0001                     | 0.091  | 0.084  |
| 0.0000                     | 0.082  | 0.120  |

Recombinant *S. aureus* LukA-LukB heterodimer (cat# 0510-001) and recombinant LukF-PV protein (cat# 0540-002) were coated onto ELISA plates at 100 ng/well. Rabbit anti-LukB polyclonal antibody was serially diluted semi-log from 10 µg/mL and incubated on the coated plates. Washed plates were detected with anti-rabbit IgG-HRP and TMB Microwell Substrate. OD650 is reported above. The anti-LukB polyclonal antibody strongly reacted to LukB in the recombinant *S. aureus* LukA-LukB heterodimer. Cross-reactivity was not observed against recombinant *S. aureus* LukF-PV at the highest concentrations of antibody tested.

**Intended for research use only, not for human, therapeutic, or diagnostic applications.**

The buyer cannot sell or otherwise transfer this product for Commercial Purposes without written approval of Integrated BioTherapeutics, Inc.

Copyright 2018. Integrated BioTherapeutics, Inc. All rights reserved.