

Rabbit anti-CCHFV N pAb

Catalog #: 04-0011

Lot #: 1207002

Immunogen: Peptide sequences specific to Crimean-Congo hemorrhagic fever virus (CCHFV) N.

Description: Affinity purified rabbit polyclonal antibody reactive to CCHFV N protein.

Supplied: Affinity purified antibody is supplied in 100 µg amounts. Antibody is provided in PBS at a concentration of **0.97 mg/mL**.

Raised in: Rabbits

Purification: Antibody is affinity purified using immobilized immunogens.

Clonality: Polyclonal

Relevance: The antibody can be used for detection of CCHFV N protein

Storage: 2-3 weeks +4°C, -20°C long term. Avoid multiple freeze thaws.

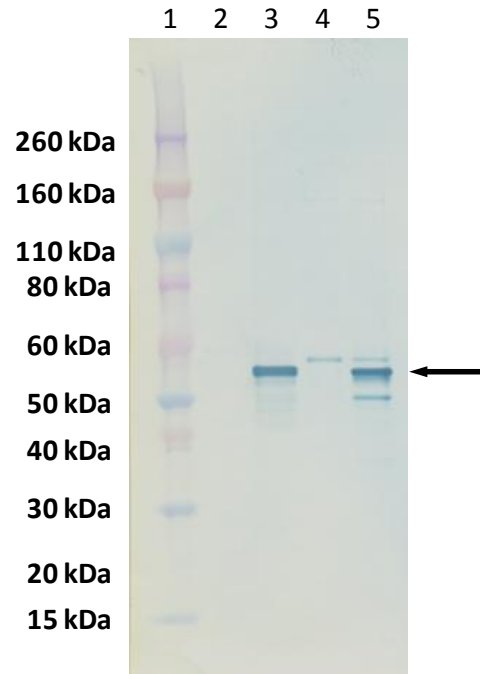
Specificity Testing:

WB: Reactivity to CCHFV infected Vero cell lysate and HEK293 cell lysate transfected with recombinant CCHFV N protein was assessed. Control Vero cells and mock transfected cell lysates were used as negative controls.

Specificity / Cross Reactivity: Not Tested

ELISA: Capture ELISA tested against peptide immunogens.

Western Blot Data



Western blot was performed with CCHFV infected Vero cell lysates and HEK293T cell lysates transfected with recombinant CCHFV N protein (lanes 3 and 5, respectively). Mock infected Vero cell lysate (lane 2) and mock transfected HEK293 cell lysate (lane 4) were also used as negative controls. Blots were detected using anti-CCHFV N pAb at 5 ng/mL and visualized using an anti-rabbit HRP conjugate and chromogenic substrate (CCHFV N shown by arrow).



21 Firstfield RD * Suite 100
 Gaithersburg, MD 20878
 877-411-2041
 Services@ibtbioservices.com

ELISA Data:

		OD450	
		Peptide 1	Peptide 2
NC	1:1,000	0.08	0.067
1	1:1,000	2.797	2.697
2	1:2,000	2.769	2.554
3	1:4,000	2.624	2.55
4	1:8,000	2.612	2.052
5	1:16,000	2.433	1.545
6	1:32,000	2.149	1.069
7	1:64,000	1.769	0.648
8	1:128,000	1.231	0.443
9	1:256,000	0.716	0.279
10	1:512,000	0.435	0.179
11	Blank	0.059	0.063
12	Blank	0.059	0.063
	Titer	1:512,000	1:512,000
Starting dilution: 1:1,000 (Equivalent to 1 ug/ml)			
The titer is the highest dilution with S/B (Sample/Blank) >=2.1			
NC is negative control (Pre-immune serum)			

Peptide immunogens were coated to plates at a concentration of 4 µg/mL, 100 µL/well in PBS. Affinity purified rabbit polyclonal antibody reactive to CCHFV N was serially diluted two fold starting at 1:1,1000 dilution. Washed plates were detected with a goat anti-rabbit IgG HRP conjugate and TMB substrate. OD₄₅₀ is reported above.

Intended for research use only, not for human, therapeutic, or diagnostic applications.