

Rabbit anti-IsdB Peptide Polyclonal Antibody

Catalog #: 0311-002

Lot #: 2208001

Immunogen: Iron-regulated Surface Determinant Protein B (IsdB) peptide (CNDASSESGKDKTPA)

Description: Rabbit polyclonal antibody broadly reactive to IsdB

Supplied: 100 µg is supplied in PBS + 0.02% proclin at a concentration of 1.309 mg/mL.

Purification: Affinity purified antibody

Clonality: Polyclonal

Relevance: This antibody may be used in conjunction with monoclonal antibodies as capture to broadly detect Iron-regulated Surface Determinant Protein B (IsdB)

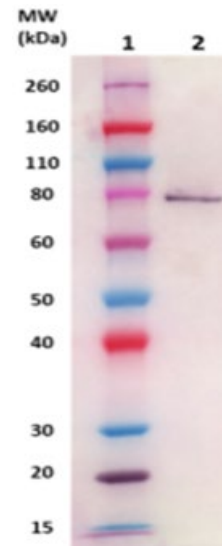
Recommended Dilutions:

ELISA: Assay-dependent dilution

WB: This antibody can be utilized for detection at a concentration of 1 µg/mL.

Storage: 2-3 weeks +4°C, -80°C long term

Western Blot



Western Blot: 100ng of IsdB protein (cat # 0541-001) was loaded and detected with anti-IsdB peptide polyclonal antibody at 1 µg/mL and visualized using an anti-rabbit AP conjugate and AP substrate (lane 2). Lanes 1 and 3 denotes Novex® Sharp prestained protein marker.