

Iron-regulated surface determinant protein B (IsdB)

Catalog #: 0541-001

Lot #: 2303002

Description: *Staphylococcus aureus* iron-regulated surface determinant protein B (IsdB) is expressed and harvested from E.coli as a recombinant protein. The theoretical molecular weight of the protein is approximately 64 kDa.

Supplied: 100 µg is supplied in PBS + 0.02% proclin at a concentration of 1.152 mg/mL.

Purification: Affinity purified antibody

Clonality: Polyclonal

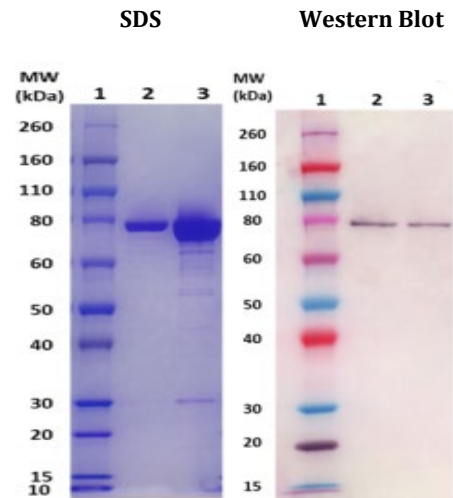
Relevance: ISDB is produced by *S. aureus* and its expression is upregulated under iron-depleted conditions by capturing heme from hemoglobin (Hb) and transporting it into the cell. IsdB has a dumbbell-like shape structure with two near iron transporter (NEAT) motifs.

Recommended Dilutions:

ELISA: Assay-dependent dilution

WB: This antibody can be utilized for detection at a concentration of 1 µg/mL.

Storage: 2-3 weeks +4°C, -80°C long term



(Left) SDS-PAGE and stain demonstrating 1µg and 5µg (lanes 2 and 3, respectively) of anti-IsdB polyclonal antibody under denaturing and reducing conditions. Lane 1 denotes Novex® Sharp prestained protein marker.

(Right) Western Blot: 100ng and 50ng (lanes 2 and 3 respectively) of IsdB protein was loaded and detected with anti-IsdB peptide polyclonal antibody (cat# 0311-002) at 1 µg/mL and visualized using an anti-rabbit AP conjugate and AP substrate (lane 2). Lane 1 Novex® Sharp prestained protein marker.