

## Rabbit anti-FhuD2 (19-302) His6 Polyclonal Antibody

**Catalog #:** 0311-005

**Lot #:** 2208004

**Immunogen:** Staphylococcus aureus ferric-hydroxamate factor uptake D2 (19-302) His6 peptide polyclonal (GEKNNKAETKSYKMC)

**Description:** Rabbit polyclonal antibody broadly reactive to FhuD2 (19-302) His6

**Supplied:** 100 µg is supplied in PBS at a concentration of 0.442 mg/mL.

**Purification:** Antibody is purified using immobilized protein A.

**Clonality:** Polyclonal

**Relevance:** This antibody may be used in conjunction with monoclonal antibodies as capture to broadly detect Staphylococcus aureus ferric-hydroxamate factor uptake D2 (FhuD2) (19-302) His6.

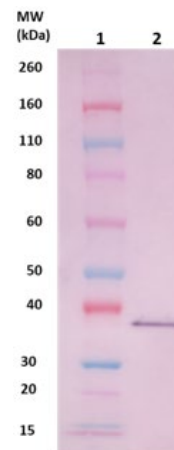
**Recommended Dilutions:**

**ELISA:** Assay-dependent dilution.

**WB:** This antibody can be utilized for detection at a concentration of 1 µg/mL.

**Storage:** 2-3 weeks +4°C, -80°C long term

### Western Blot Data:



Western Blot: 100ng (lane 2) of FhuD2 (19-302) His6 protein (cat # 0541-004) was loaded and detected with anti-FhuD2 (19-302) His6 polyclonal antibody at 1 µg/mL and visualized using an anti-rabbit AP conjugate and AP substrate (lane 2). Lane 1 denotes Novex@ Sharp prestained protein marker.