

## Rabbit anti-EsxA His-6 Polyclonal Antibody

**Catalog #:** 0311-007

**Lot #:** 2208006

**Immunogen:** Staphylococcus aureus Ess extracellular protein A (EsxA) His-6 peptide polyclonal (MSPEEIRAKSQSYGC)

**Description:** Rabbit polyclonal antibody broadly reactive to EsxA His-6

**Supplied:** 100 µg is supplied in PBS at a concentration of 1.743 mg/mL.

**Purification:** Antibody is purified using immobilized protein A.

**Clonality:** Polyclonal

**Relevance:** This antibody may be used in conjunction with monoclonal antibodies as capture to broadly detect Staphylococcus aureus Ess extracellular protein A (EsxA) His-6.

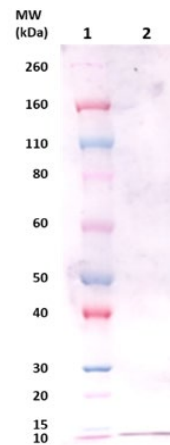
**Recommended Dilutions:**

**ELISA:** Assay-dependent dilution.

**WB:** This antibody can be utilized for detection at a concentration of 1 µg/mL.

**Storage:** 2-3 weeks +4°C, -80°C long term

### Western Blot Data:



Western Blot: 100ng (lane 2) of EsxA His-6 protein (cat # 0541-006) was loaded and detected with anti-EsxA His-6 polyclonal antibody at 1 µg/mL and visualized using an anti-rabbit AP conjugate and AP substrate (lane 2). Lane 1 denotes Novex® Sharp prestained protein marker.