

Conserved Staph antigen, 1A (Csa1A) 39-40

Catalog #: 0541-002

Lot #: 2303003

Description: *Staphylococcus aureus* cell surface associated lipoprotein Conserved Staph Antigen, 1A (Csa1A) 39-40 is expressed harvested from E.coli as a recombinant protein. Csa1A construct starts at the 39-40 amino acid sequence. The theoretical molecular weight of the protein is approximately 28.0 kDa.

Supplied: 100 µg is supplied in PBS + 0.02% proclin at a concentration of **1.83 mg/mL**.

Purification: Affinity purified antibody

Clonality: Polyclonal

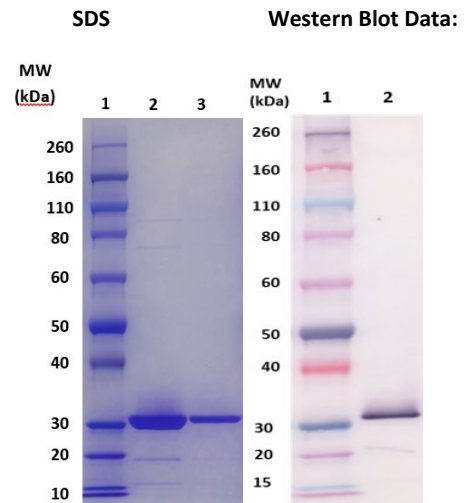
Relevance: Csa1a is antigenic, post-translational processed and cell surface exposed lipoproteins. One of Csa1a roles is their immunogenic response.

Recommended Dilutions:

ELISA: Assay-dependent dilution

WB: This antibody can be utilized for detection at a concentration of 1 µg/mL.

Storage: 2-3 weeks +4°C, -80°C long term



(Left) SDS-PAGE and stain demonstrating 1µg and 5µg (lanes 2 and 3, respectively) of anti-Csa1A polyclonal antibody under denaturing and reducing conditions. Lane 1 denotes Novex® Sharp prestained protein marker.

(Right) Western Blot: 100ng (lane 2) of Csa1A (39-40) protein was loaded and detected with anti-Csa1A peptide polyclonal antibody (cat# 0311-003) at 1 µg/mL and visualized using an anti-rabbit AP conjugate and AP substrate (lane 2). Lane 1 denotes Novex® Sharp prestained protein marker.