

## Staphylococcus Aureus Clumping Factor A (rClfA) 40A (41-559) His6

**Catalog #:** 0541-003

**Lot #:** 2303004

**Description:** Staphylococcus aureus Clumping Factor A (rClfA) 40A (41-559) His6 is expressed and harvested from E.coli as a recombinant protein. rClfA 40A (41-559) construct starts at the 41 amino acid sequence with a total of 559 amino acids. The theoretical molecular weight of the protein is approximately 56.1 kDa.

**Supplied:** 100 µg is supplied in PBS + 0.02% proclin at a concentration of 3.125 mg/mL.

**Purification:** Affinity purified antibody

**Clonality:** Polyclonal

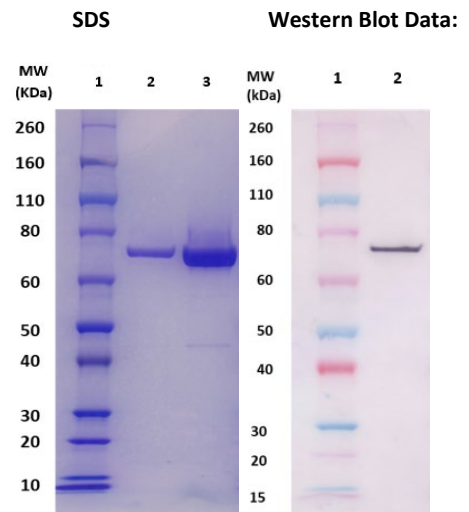
**Relevance:** rClfA is a cell wall surface exposed protein with a role in immunostimulatory response. rClfA acts as an adhesin by inducing formation of clumps from its attachment to fibrinogen; therefore, contributing to infection initiation.

### Recommended Dilutions:

**ELISA:** Assay-dependent dilution

**WB:** This antibody can be utilized for detection at a concentration of 1 µg/mL.

**Storage:** 2-3 weeks +4°C, -80°C long term



(Left) SDS-PAGE and stain demonstrating 1µg and 5µg (lanes 2 and 3, respectively) of anti- rClfA 40A (41-559) His6 polyclonal antibody under denaturing and reducing conditions. Lane 1 denotes Novex® Sharp prestained protein marker.

(Right) Western Blot: 100ng (lane 2) of rClfA 40A (41-559) His6 protein was loaded and detected with anti- rClfA 40A (41-559) His6 peptide polyclonal antibody (cat# 0311-004) at 1 µg/mL and visualized using an anti-rabbit AP conjugate and AP substrate (lane 2). Lanes 1 denotes Novex® Sharp prestained protein marker.