

Staphylococcus Aureus ESAT-6-like secretion system (Ess) extracellular protein B (EsxB) His6

Catalog #: 0541-005

Lot #: 2303006

Description: Staphylococcus aureus Ess extracellular protein B (EsxB) His6 is expressed and harvested from E.coli as a recombinant protein. The theoretical molecular weight of the protein is approximately 12.3 kDa.

Supplied: 100 µg is supplied in PBS + 0.02% proclin at a concentration of 1.948 mg/mL.

Purification: Affinity purified antibody

Clonality: Polyclonal

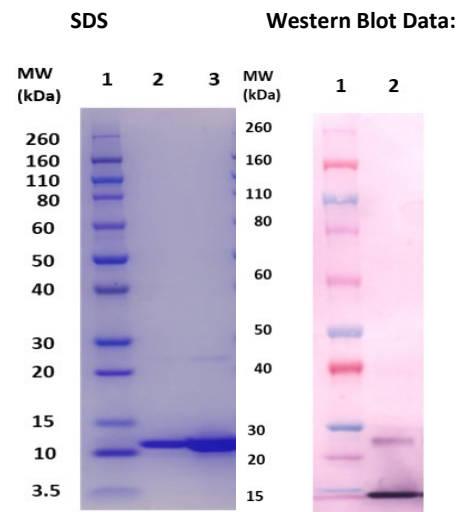
Relevance: EsxB is a small acidic homodimer playing an important role in regulating apoptosis, releasing of S. aureus from the host cell. By regulating the host immune response, EsxB can inhibit cytokine production; consequently, the pathogen can feasibly spread and infect the host.

Recommended Dilutions:

ELISA: Assay-dependent dilution

WB: This antibody can be utilized for detection at a concentration of 1 µg/mL.

Storage: 2-3 weeks +4°C, -80°C long term



(Left) SDS-PAGE and stain demonstrating 1 µg and 5 µg (lanes 2 and 3, respectively) of anti-EsxB His6 polyclonal antibody under denaturing and reducing conditions. Lane 1 denotes Novex® Sharp prestained protein marker.

(Right) Western Blot: 100ng (lane 2) of EsxB His6 protein was loaded and detected with anti-EsxB His6 peptide polyclonal antibody (cat# 0311-006) at 1 µg/mL and visualized using an anti-rabbit AP conjugate and AP substrate (lane 2). Lanes 1 denotes Novex® Sharp prestained protein marker.

Intended for research use only, not for human, therapeutic, or diagnostic applications. *The buyer cannot sell or otherwise transfer this product for Commercial Purposes without written approval of Integrated BioTherapeutics, Inc.*

Copyright 2023. Integrated BioTherapeutics, Inc. All rights reserved.