

Staphylococcus Aureus ESAT-6-like secretion system (Ess) extracellular protein A (EsxA) His-6

Catalog #: 0541-006

Lot #: 2303007

Description: Staphylococcus aureus Ess extracellular protein A (EsxA) His-6 is expressed and harvested from E.coli as a recombinant protein. The theoretical molecular weight of the protein is approximately 11.8 kDa.

Supplied: 100 µg is supplied in PBS + 0.02% proclin at a concentration of 5.37 mg/mL.

Purification: Affinity purified antibody

Clonality: Polyclonal

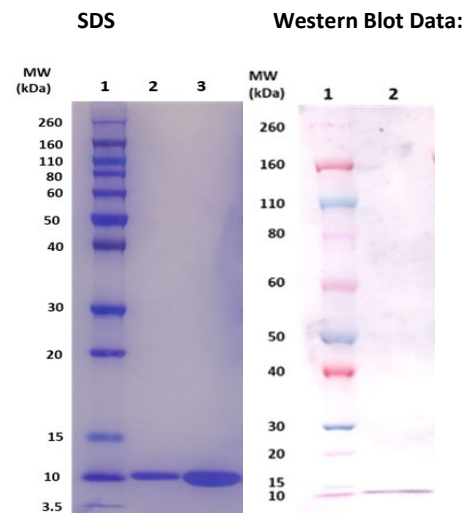
Relevance: EsxA is also a small acidic homodimer, like EsxB, playing an important role in regulating apoptosis as well as inducing necrosis in aging neutrophils and releasing of S. aureus from the host cell. By regulating the host immune response, EsxA can inhibit cytokine production; consequently, the pathogen can feasibly spread and infect the host.

Recommended Dilutions:

ELISA: Assay-dependent dilution

WB: This antibody can be utilized for detection at a concentration of 1 µg/mL.

Storage: 2-3 weeks +4°C, -80°C long term



(Left) SDS-PAGE and stain demonstrating 1 µg and 5 µg (lanes 2 and 3, respectively) of anti-EsxA His-6 polyclonal antibody under denaturing and reducing conditions. Lane 1 denotes Novex® Sharp prestained protein marker.

(Right) Western Blot: 100 ng (lane 2) of EsxA His-6 protein was loaded and detected with anti-EsxA His-6 peptide polyclonal antibody (cat# 0311-007) at 1 µg/mL and visualized using an anti-rabbit AP conjugate and AP substrate (lane 2). Lanes 1 denotes Novex® Sharp prestained protein marker.

Intended for research use only, not for human, therapeutic, or diagnostic applications. The buyer cannot sell or otherwise transfer this product for Commercial Purposes without written approval of Integrated BioTherapeutics, Inc.

Copyright 2023. Integrated BioTherapeutics, Inc. All rights reserved.