

Anti-*Staph* Enterotoxin A (SEA) Chimeric mAb (517)

Catalog #: 0221-013

Lot #: 2307006

Immunogen: Staphylococcus Enterotoxin A (SEA).

Description: Human monoclonal antibody reactive to *Staphylococcus aureus* Enterotoxin A.

Supplied: 100 µg is supplied in PBS at a concentration of 0.928 mg/mL.

Purification: Antibody is purified using immobilized protein A/G.

Clonality: Monoclonal of the human IgG₁ isotype.

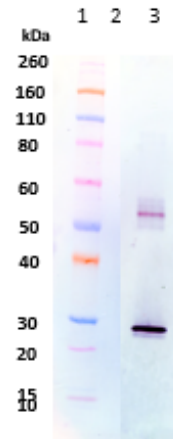
Storage: 2-3 weeks +4°C, -80°C long term.

Recommended Dilutions:

WB: This antibody can be utilized for detection at a concentration of 0.5 µg/mL.

ELISA: Assay-dependent dilution. The antibody can be used as primary antibody against SEA in a capture ELISA assay and Western blot detection.

Western Blot Data:

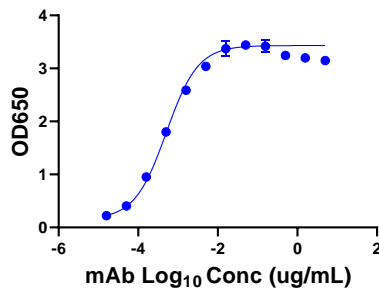


Western Blot Detection: 100ng (lane 3) of *S. aureus* Enterotoxin A (SEA) was loaded and detected with Human anti-*Staph* Enterotoxin A mAb (517) at 0.5 µg/mL, a goat anti-Human IgG-HRP conjugate and TMB substrate (lanes 1 and 3). Lane 1 denotes Novex® Sharp prestained protein marker.

Neutralization: Dose dependent neutralization of SEA-induced IFN-γ production in human peripheral mononuclear cells (PBMC).

ELISA Data:

mAb 517



Toxin Neutralization Data:

SEA TNA

