

Anti-*Staph* Enterotoxin Q (SEQ) Chimeric mAb (1057)

Catalog #: 0221-015

Lot #: 2307008

Immunogen: Staphylococcus Enterotoxin Q (SEQ).

Description: Chimeric monoclonal antibody reactive to *Staphylococcus aureus* Enterotoxin Q.

Supplied: 100 µg is supplied in PBS at a concentration of 1.580 mg/mL.

Purification: Antibody is purified using immobilized protein A/G.

Clonality: Monoclonal of the human IgG₁ isotype.

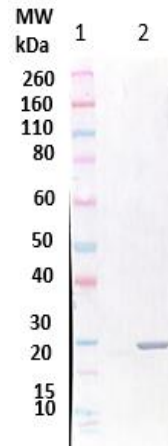
Storage: 2-3 weeks +4°C, -80°C long term

Recommended Dilutions:

WB: This antibody can be utilized for detection at a concentration of 5.0 µg/mL.

ELISA: Assay-dependent dilution. The antibody can be used as primary antibody against SEQ in a capture ELISA assay and Western blot detection.

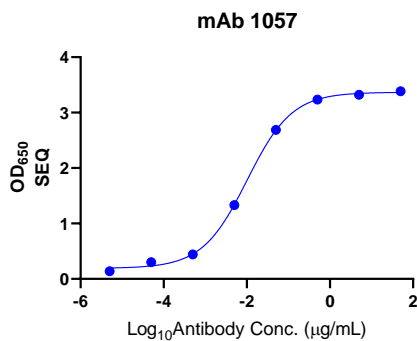
Western Blot Data:



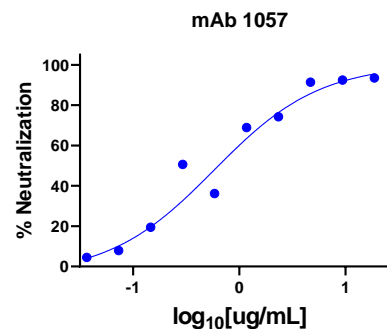
Western Blot Detection: 200ng (lane 2) of *S. aureus* Enterotoxin Q (SEQ) was loaded and detected with Human anti-*Staph* Enterotoxin Q mAb (1057) at 5.0 µg/mL, a goat anti-Human IgG-HRP conjugate and TMB substrate (lanes 1 and 2). Lane 1 denotes Novex@ Sharp prestained protein marker.

Neutralization: Dose dependent neutralization of SEQ-induced IFN-γ production in human peripheral mononuclear cells (PBMC).

ELISA Data:



Toxin Neutralization Data:



Intended for research use only, not for human, therapeutic, or diagnostic applications. The buyer cannot sell or otherwise transfer this product for Commercial Purposes without written approval of Integrated BioTherapeutics, Inc.

Copyright 2023. Integrated BioTherapeutics, Inc. All rights reserved.