



4 Research Court, Suite 300
Rockville, MD 20850
+1 (877)-411-2041
Services@ibtbioservices.com

Anti-*Staph* Glucosaminidase (GMD) Non-Neutralizer Chimeric mAb (1641)

Catalog #: 0221-019

Lot #: 2307012

Immunogen: *Staphylococcus* Glucosaminidase (GMD).

Description: Chimeric monoclonal antibody reactive to *Staphylococcus aureus* Glucosaminidase.

Supplied: 100 µg is supplied in PBS at a concentration of 0.164 mg/mL.

Purification: Antibody is purified using immobilized protein A/G.

Clonality: Monoclonal of the human IgG₁ isotype.

Storage: 2-3 weeks +4°C, -80°C long term

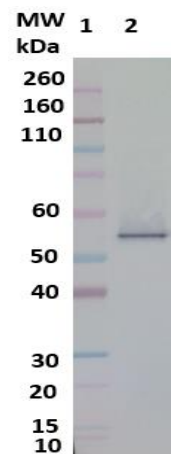
Recommended Dilutions:

WB: This antibody can be utilized for detection at a concentration of 1.0 µg/mL.

ELISA: Not recommended for use.

Neutralization: Not recommended for use.

Western Blot Data:



Western Blot Detection: 50ng (lane 2) of *S. aureus* Glucosaminidase (GMD) was loaded and detected with Human anti-*Staph* GMD non-neutralizer mAb (1641) at 1.0 µg/mL, a goat anti-Human IgG-HRP conjugate and TMB substrate (lanes 1 and 2). Lane 1 denotes Novex® Sharp prestained protein marker.

Intended for research use only, not for human, therapeutic, or diagnostic applications. The buyer cannot sell or otherwise transfer this product for Commercial Purposes without written approval of Integrated BioTherapeutics, Inc.

Copyright 2023. Integrated BioTherapeutics, Inc. All rights reserved.