

Anti-*Staph* Enterotoxin Q (SEQ) Chimeric mAb (1047)

Catalog #: 0221-021

Lot #: 2307016

Immunogen: Staphylococcus Enterotoxin Q (SEQ).

Description: Chimeric monoclonal antibody reactive to *Staphylococcus aureus* Enterotoxin Q.

Supplied: 100 µg is supplied in PBS at a concentration of 2.830 mg/mL.

Purification: Antibody is purified using immobilized protein A/G.

Clonality: Monoclonal of the human IgG₁ isotype.

Storage: 2-3 weeks +4°C, -80°C long term

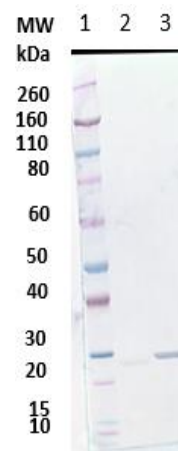
Recommended Dilutions:

WB: This antibody can be utilized for detection at a concentration of 15.0 µg/mL.

ELISA: Not recommended for use.

Neutralization: Not recommended for use.

Western Blot Data:



Western Blot Detection: 200ng (lane 3) of *S. aureus* Enterotoxin Q (SEQ) was loaded and detected with Human anti-*Staph* Enterotoxin Q mAb (1047) at 15.0 µg/mL, a goat anti-Human IgG-HRP conjugate and TMB substrate (lanes 1 and 3). Lane 1 denotes Novex® Sharp prestained protein marker.