

Anti-MARV chimeric GP mAb (2D8)

Catalog #: 0203-027

Lot #: 2307017

Description:

Protein A purified chimeric monoclonal antibody reactive to glycoprotein (GP) in MARV virus-like particles (VLP) and MARV recombinant glycoprotein.

Immunogen/Target:

Purified, recombinant Marburg Virus (MARV) Angola strain glycoprotein lacking the transmembrane region and the mucin domain (rGP Δ muc).

Formulation & Storage: Supplied in PBS. Store at +4°C for 2-3 weeks, -80°C for long term.

Notes & Usage Guidelines:

Clonality/Isotype: Monoclonal; IgG₁

Host: Human

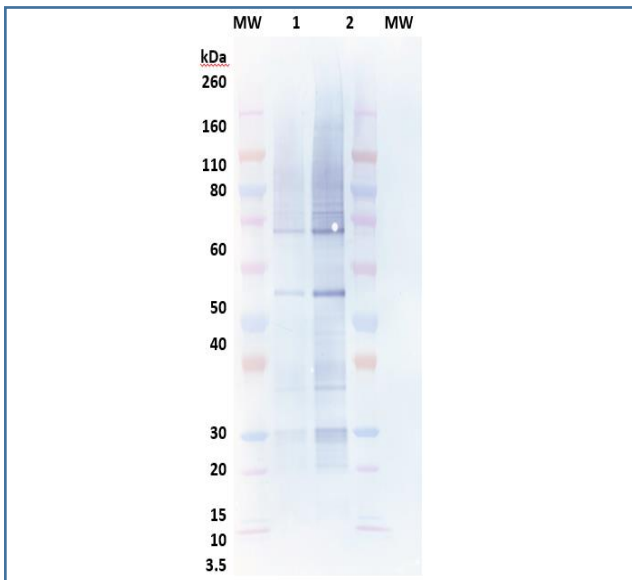
ELISA: Assay-dependent dilution

WB: Assay-dependent dilution

Applications

Western Blot Data:

Heat-denatured, reduced AMARV rGP Δ TM (Sf9) (cat# 0506-015) was loaded at 100ng and 500ng per lane (lanes 1 and 2, respectively). Western Blot was detected using 0.1 μ g/mL chimeric anti-MARV GP mAb 2D8 and visualized using an anti-human IgG-HRP conjugate, followed by TMB Membrane substrate.



ELISA Data:

Antigen diluted to 1 μ g/mL in DPBS for plate coating. Chimeric anti-MARV GP mAb 2D8 was serially diluted semi-log from 10 μ g/mL and incubated on the coated plates. Washed plates were detected with anti-human IgG-HRP conjugate and TMB Microwell substrate. OD650 is reported below.

mAb 2D8 μ g/mL	100 ng/well
	AMARV rGP Δ TM
10.0000	3.353
3.1623	3.292
1.0000	3.310
0.3162	3.250
0.1000	3.103
0.0316	2.821
0.0100	2.050
0.0032	1.105
0.0010	0.556
0.0003	0.309
0.0001	0.216
	OD 650 nm

Certificate of Testing for:

Lot#: **2307017**

Volume: 100 μ g

Concentration: 0.333 mg/mL

Related Products:

IBT provides a wide array of antibodies, recombinant proteins, and other infectious disease reagents. Please see our website, www.ibtbioservices.com for more details.

Intended for research use only, not for human, therapeutic, or diagnostic applications.

The buyer cannot sell or otherwise transfer this product for Commercial Purposes without written approval of Integrated BioTherapeutics, LLC.

Copyright 2023. Integrated BioTherapeutics, LLC. All rights reserved.